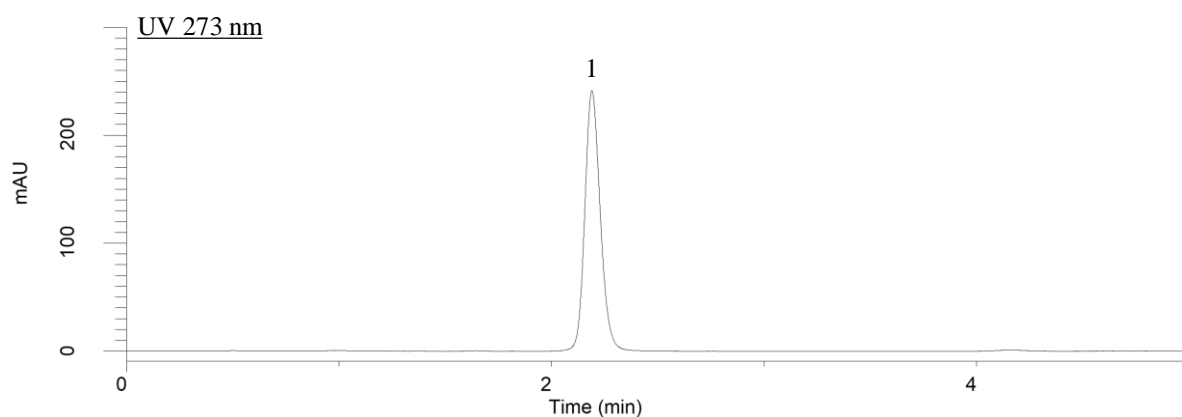
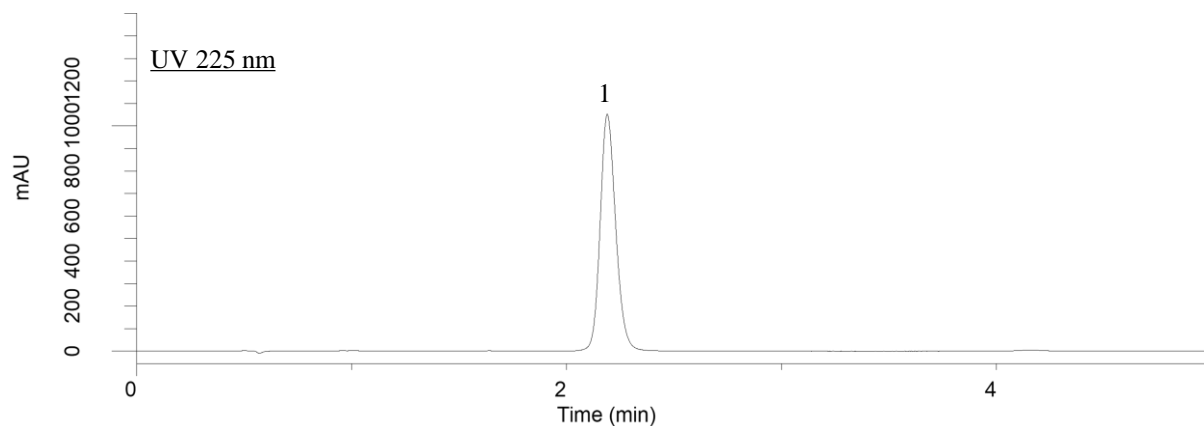


## Analysis of Valsartan (Inertsil ODS-4)



### Conditions

**Column** : InertSustain C18 HP (3  $\mu$ m, 50 x 4.6 mm I.D.)

**Column Cat. No.** : 5020-14442

**Eluent** : A) CH<sub>3</sub>CN  
 B) CH<sub>3</sub>COOH  
 C) H<sub>2</sub>O  
 A/B/C = 500/1/500, v/v/v

**Flow rate** : 1.0 mL/min

**Col. Temp.** : 25 °C

**Detection** : UV 225, 273 nm

**Injection Vol.** : 5  $\mu$ L

**Sample** : Standard (diluted with mobile phase)

### Analyte:

1. Valsartan (500 mg/L)