

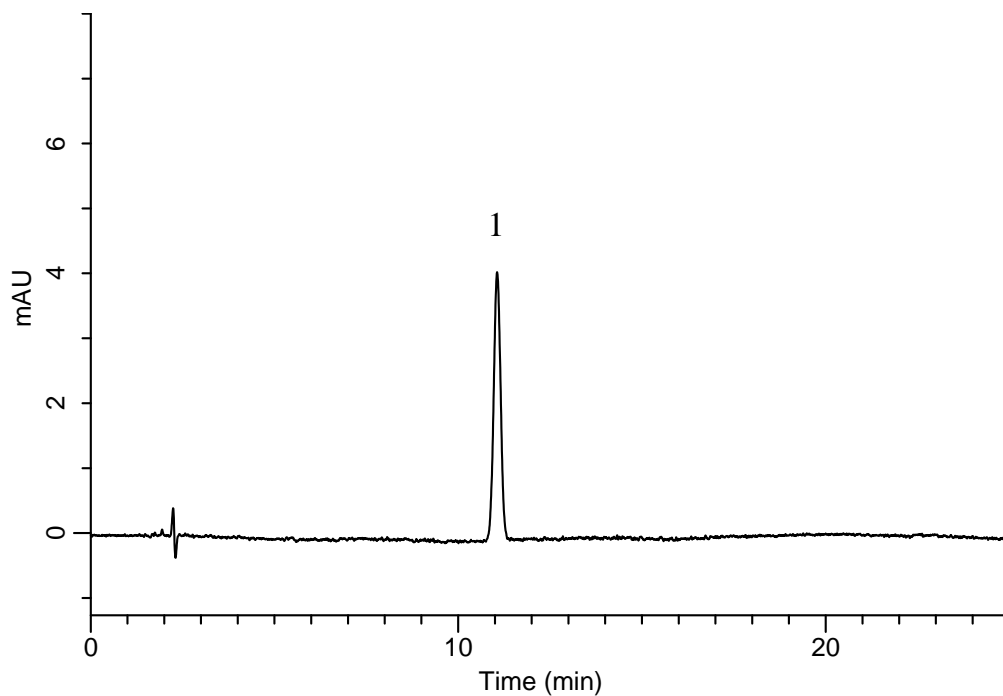
InertSearch™ for LC

Inertsil® Applications

Analysis of Olopatadine hydrochloride

(Under the Condition of Japanese Pharmacopoeia)

Data No. LB054-0894



Conditions

System : GL-7400 HPLC system
Column : InertSustain C8
(5 μ m, 250 \times 4.6 mm I.D.)
Column Cat. No. : 5020-16028
Eluent : CH₃CN/50 mM KH₂PO₄ (pH 3.5, H₃PO₄) = 9/11, v/v
+ 2.3 g/L IPCC-12A
(IPCC-12A : Sodium 1-Dodecylsulfate)
Flow Rate : 1.1 mL/min
Col. Temp. : 40 °C
Detection : UV 299 nm (GL-7452 PDA Detector)
Injection Vol. : 20 μ L

Analyte:

1. Olopatadine hydrochloride 5 mg/L

Theoretical plates : 16272 \geq 8000
Tailing factor : 1.02 \leq 2.0
RSD of the
peak area (%) : 1.19 \leq 2.0 (n=6)