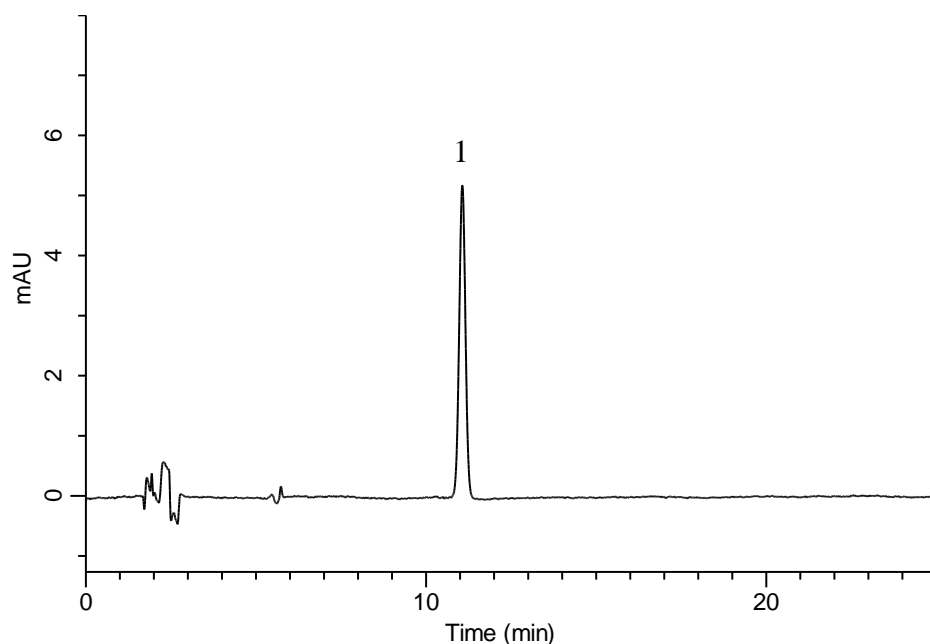


Analysis of Olopatadine hydrochloride

(Under the Condition of Japanese Pharmacopoeia, Olopatadine hydrochloride Tablets)



Conditions

System : GL-7400 HPLC system
Column : InertSustain C8
 (5 μ m, 250 \times 4.6 mm I.D.)
Column Cat. No. : 5020-16028
Eluent : CH₃CN/50 mM KH₂PO₄ (pH 3.5, H₃PO₄) = 9/11, v/v
 + 2.3 g/L IPCC-12A
 (IPCC-12A : Sodium 1-Dodecylsulfate)
Flow Rate : 1.1 mL/min
Col. Temp. : 40 °C
Detection : UV 299 nm (GL-7452 PDA Detector)
Injection Vol. : 50 μ L
Sample : Standard

Analyte:

1. Olopatadine hydrochloride 2.8 mg/L

Theoretical plates : 17083 \geq 10000

Tailing factor : 1.01 \leq 2.0

RSD of the
peak area (%) : 1.47 \leq 1.5 (n=6)