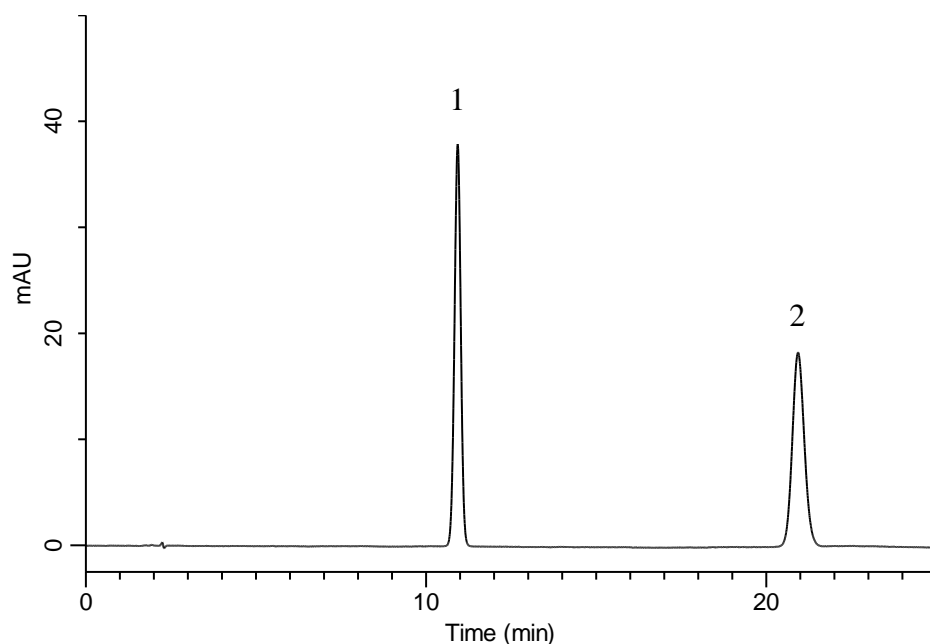


Analysis of Olopatadine hydrochloride

(Under the Condition of Japanese Pharmacopoeia, Olopatadine hydrochloride Tablets)



Conditions

System : GL-7400 HPLC system
Column : InertSustain C8
 (5 μ m, 250 \times 4.6 mm I.D.)
Column Cat. No. : 5020-16028
Eluent : CH₃CN/50 mM KH₂PO₄ (pH 3.5, H₃PO₄) = 9/11, v/v
 + 2.3 g/L IPCC-12A
 (IPCC-12A : Sodium 1-Dodecylsulfate)
Flow Rate : 1.1 mL/min
Col. Temp. : 40 °C
Detection : UV 299 nm (GL-7452 PDA Detector)
Injection Vol. : 20 μ L
Sample : Standard

Analyte:

1. Olopatadine hydrochloride 50 mg/L
 2. Doxepin hydrochloride 35 mg/L

Resolution (1, 2) : $20.3 \geq 13$
 RSD of the
 peak area ratio of
 1 to 2 (%) : $0.32 \leq 1.0$ (n=6)