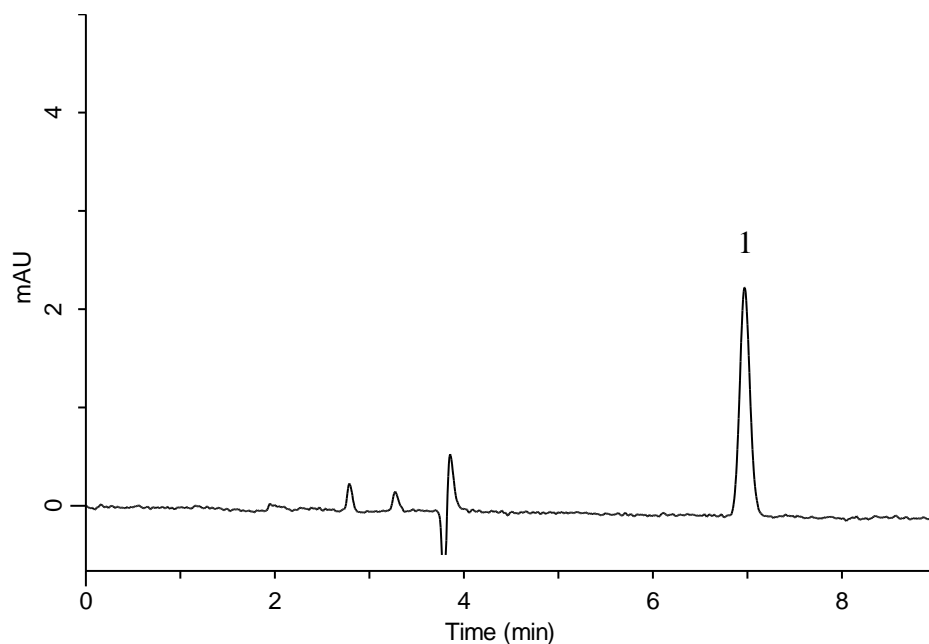


## Analysis of Acetylcysteine

(Under the Condition of Japanese Pharmacopoeia 16)



### Conditions

**System** : GL-7400 HPLC system  
**Column** : Inertsil ODS-4 (5 $\mu$ m, 250 x 4.6 mm I.D.)  
**Column Cat. No.** : 5020-03946  
**Eluent** : A) CH<sub>3</sub>CN  
           : B) 0.04 % H<sub>3</sub>PO<sub>4</sub>  
           : A/B = 5/95, v/v  
**Flow rate** : 1.1 mL/min  
**Col. Temp.** : 40 °C  
**Detection** : UV 220 nm (GL-7452A PDA Detector)  
**Injection Vol.** : 10  $\mu$ L

### Analyte:

1. Acetylcysteine 10 mg/L

Theoretical plates : 18,873 ( $\geq$  15,000)