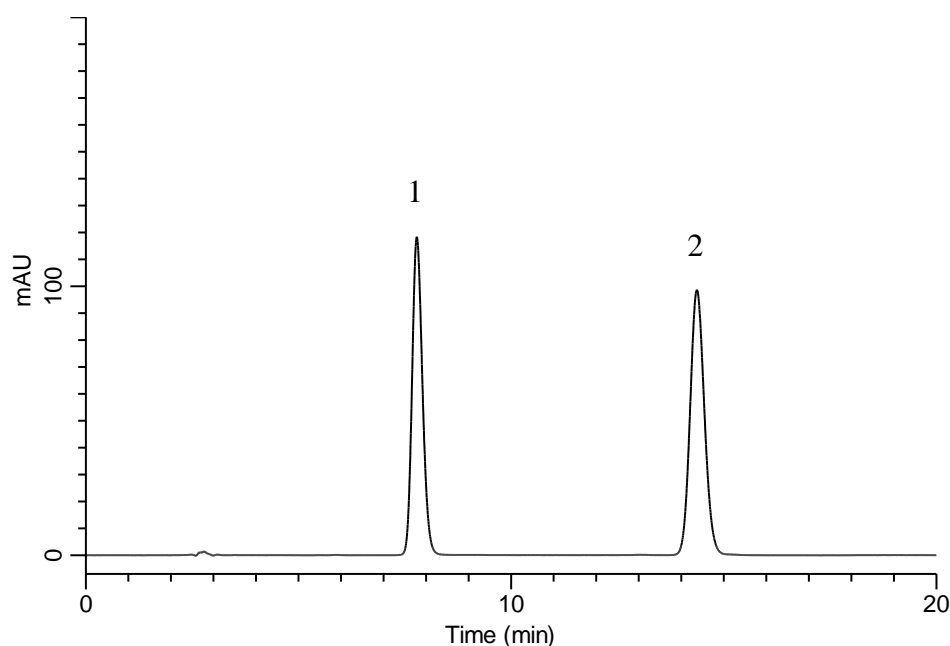


Analysis of Amlodipine Besilate

(Under the Condition of Japanese Pharmacopoeia, Amlodipine Besilate Tablets)



Conditions

System : GL-7400 HPLC system
Column : InertSustain C18
 (5 μ m, 150 \times 4.6 mm I.D.)
Column Cat. No. : 5020-07345
Eluent : A) CH₃OH
 B) 4.1 g/L KH₂PO₄
 A/B = 65/35, v/v
Flow Rate : 0.6 mL/min
Col. Temp. : 25 °C
Detection : UV 237 nm (GL-7452 PDA Detector)
Injection Vol. : 20 μ L
Sample : Standard

Analyte:

1. Amlodipine besilate 28 mg/L
 2. Isobutyl *p*-hydroxybenzoate 30 mg/L

Resolution (1, 2) : 12.5 (\geq 5)
 RSD of the
 peak area (%) (n=6) : 0.11 (\leq 1.0)