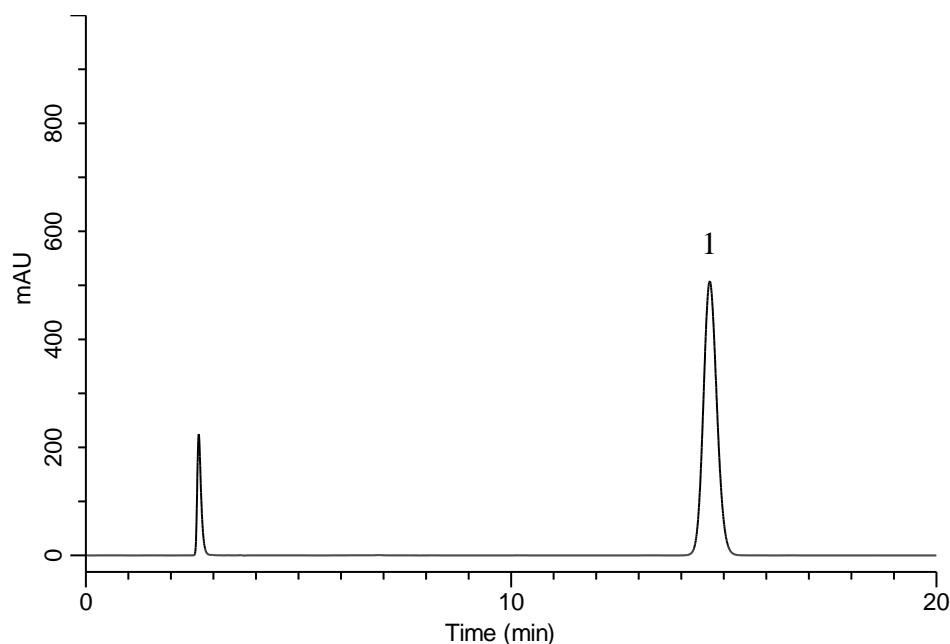


## Analysis of Quetiapine Fumarate

(Under the Condition of the Japanese Pharmacopoeia)



### Conditions

**System** : GL-7400 HPLC system  
**Column** : Inertsil C8-4  
 (5 $\mu$ m, 250  $\times$  4.6 mm I.D.)  
**Column Cat. No.** : 5020-04086  
**Eluent** : A) CH<sub>3</sub>CN  
 B) CH<sub>3</sub>OH  
 C) 20 mM (NH<sub>4</sub>)<sub>2</sub>HPO<sub>4</sub> (pH 6.5, H<sub>3</sub>PO<sub>4</sub>)  
 A/B/C = 7/54/39, v/v/v  
**Flow Rate** : 0.95 mL/min  
**Col. Temp.** : 25 °C  
**Detection** : UV 230 nm (GL-7452 PDA Detector)  
**Injection Vol.** : 50  $\mu$ L

### Analyte:

1. Quetiapine fumarate 80 mg/L

Theoretical plates : 10,026 ( $\geq$  6,000)  
 Tailing factor : 1.11 ( $\leq$  2.0)  
 RSD of the  
 peak area (n=6) : 0.51 ( $\leq$  1.0)