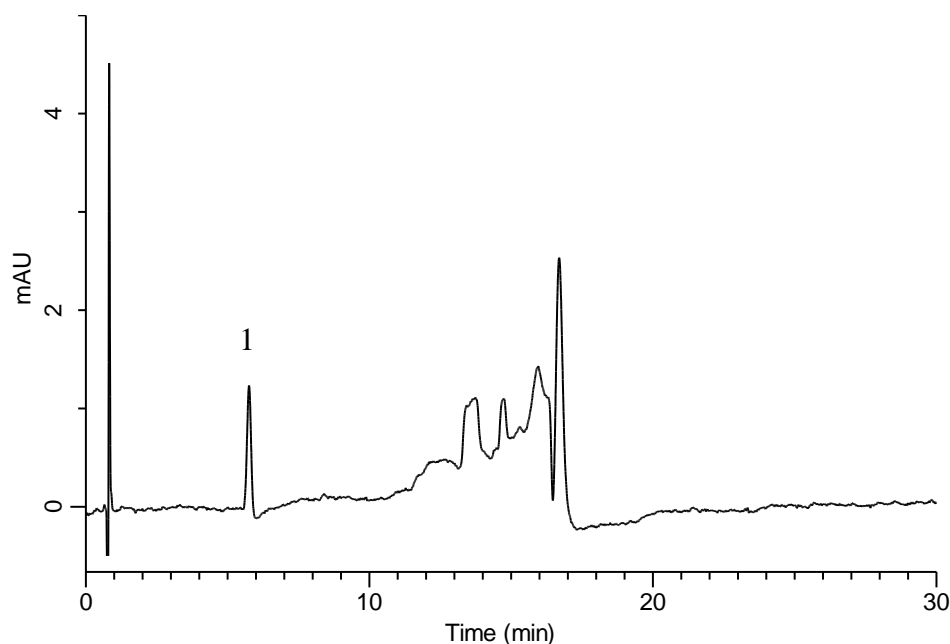


Analysis of Brotizolam

(Under the Condition of the Japanese Pharmacopoeia)



Conditions

System : GL-7400 HPLC system
Column : Inertsil WP300 C8
 (5 μ m, 150 \times 3.9 mm I.D.)
Column Cat. No. : 5020-87046
Eluent : A) 1.84 g/L IPCC-07 in H₂O / CH₃CN = 25/75, v/v
 B) 1.84 g/L IPCC-07 in H₂O
 (IPCC-07 : Sodium 1-Heptane sulfonate)
 A/B = 37/63 - 4 min - 37/63 -11 min - 88/12
 - 0.1 min - 37/63 - 14.9 min - 37/63, v/v
Flow Rate : 2.0 mL/min
Col. Temp. : 40 °C
Detection : UV 242 nm (GL-7452 PDA Detector)
Injection Vol. : 5 μ L

Analyte:

1. Brotizolam 2 mg/L
 Theoretical plates : 6,914 (\geq 5,000)
 Tailing factor : 0.98 (\leq 2.0)
 RSD of the
 peak area (n=6) : 1.21 (\leq 2.0)