

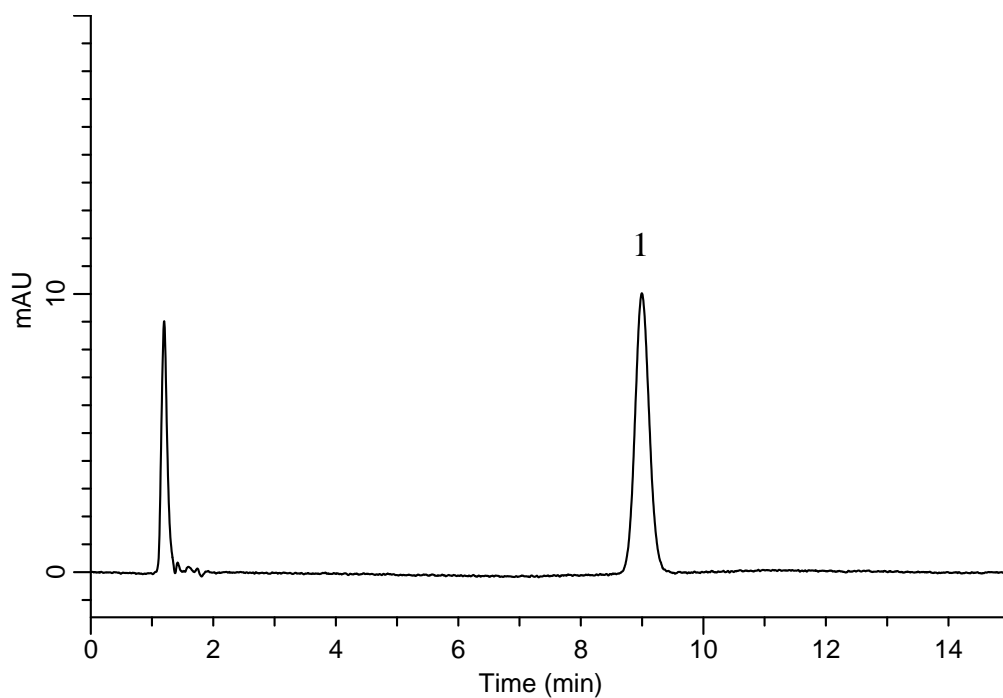
InertSearch™ for LC

Inertsil® Applications

Analysis of Mosapride Citrate Tablets

(Under the Condition of Japanese Pharmacopoeia 16)

Data No. LB066-0894



Conditions

System : GL-7400 HPLC system
Column : InertSustain C18
(5 μ m, 150 \times 4.6 mm I.D.)
Column Cat. No. : 5020-07345
Eluent : A) CH₃CN
B) CH₃OH
C) 30 mM Citric acid Buffer*
A/B/C = 7/9/24, v/v/v
Flow Rate : 1.1 mL/min
Col. Temp. : 40 °C
Detection : UV 274 nm (GL-7452 PDA Detector)
Injection Vol. : 50 μ L
Sample : Standard

Analyte:

1. Mosapride citrate 3 mg/L

Theoretical plates : 7,040 (\geq 4,000)
Tailing factor : 1.07 (\leq 2.0)
RSD of the peak area (%) (n=6) : 0.63 (\leq 2.0)

* 30 mM Citric acid buffer : Dissolve 8.82 g of Tri-sodium Citrate Dihydrate in 800 mL of water, and adjust the pH value to 3.3 by dilute hydrochloric acid, and make up water to 1L.