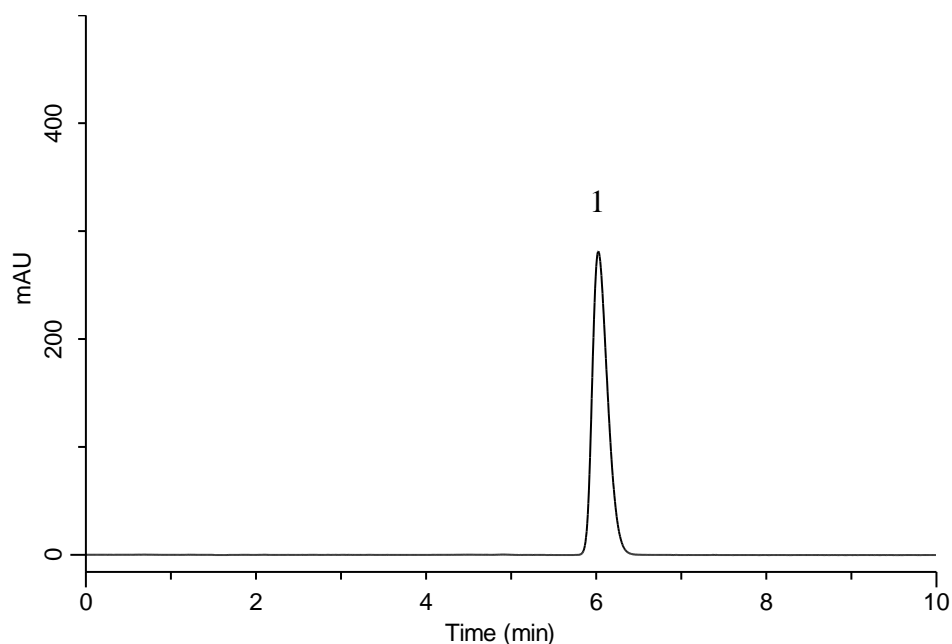


Analysis of Aripiprazole



Conditions

System : GL-7400 HPLC system
Column : InertSustain C18
 (5 μ m, 150 \times 4.6 mm I.D.)
Column Cat. No. : 5020-07345
Eluent : A) CH₃CN
 B) CH₃OH
 C) 20 mM Na₂SO₄
 D) CH₃COOH
 A/B/C/D = 33/11/56/1, v/v/v/v
Flow Rate : 1.0 mL/min
Col. Temp. : 25 °C
Detection : UV 254 nm (GL-7452 PDA Detector)
Injection Vol. : 20 μ L

Analyte:

1. Aripiprazole 100 mg/L

 Theoretical plates : 5,307
 Tailing factor : 1.38
 RSD of the
 peak area (n=6) : 0.05