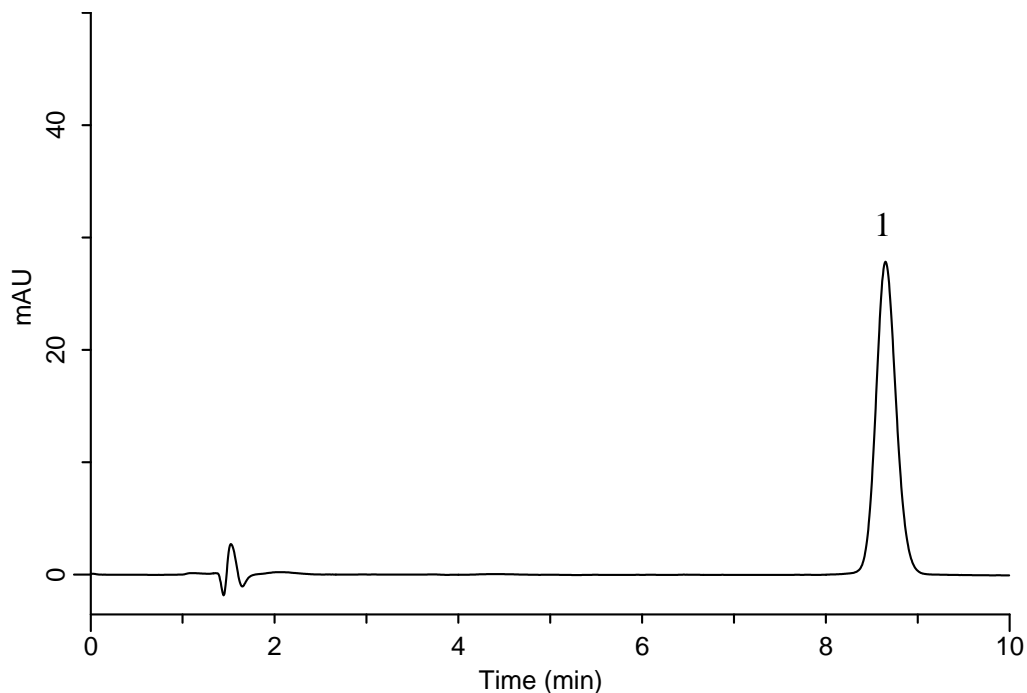


# InertSearch™ for LC

Inertsil® Applications

## Analysis of Rosuvastatin Calcium

Data No. LB069-0894



### Conditions

**System** : GL-7400 HPLC system  
**Column** : InertSustain C18 (5  $\mu$  m, 150 x 4.6 mm I.D.)  
**Column Cat. No.** : 5020-07345  
**Eluent** : A) CH<sub>3</sub>CN  
          : B) 0.1 % H<sub>3</sub>PO<sub>4</sub>  
          : A/B = 40/60, v/v  
**Flow rate** : 1.0 mL/min  
**Col. Temp.** : 25 °C  
**Detection** : UV 242 nm (GL-7452A PDA Detector)  
**Injection Vol.** : 20  $\mu$  L

### Analyte:

1. Rosuvastatin calcium      10 mg/L

Theoretical plates : 7,399  
Tailing factor : 1.09  
RSD of the  
peak area (n=6) : 0.91