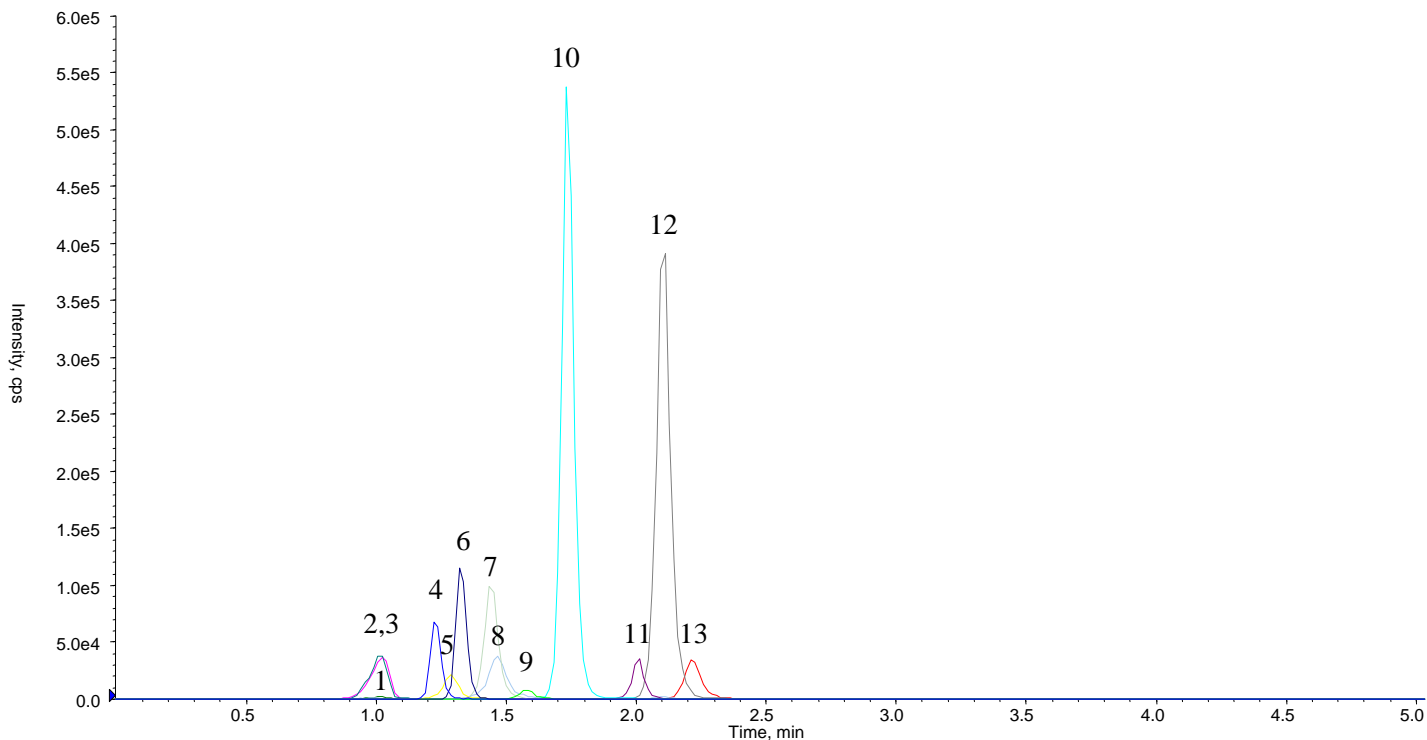


InertSearch™ for LC

Inertsil® Applications

Analysis of 13 drugs for NSAIDs

Data No. LB070-0894



Conditions

System : LC800 HPLC system
4000 Q TRAP®

Column : InertSustain C18 (2 μm, 100 x 2.1 mm I.D.)

Column Cat. No. : 5020-14354

Eluent : A) CH₃CN
B) 5 mM HCOONH₄
A/B = 50/50 - 5 min - 90/10, v/v

Flow Rate : 0.3 mL/min

Col. Temp. : 40 °C

Detection : LC/MS/MS (4000Q TRAP® : ESI, Negative, MRM)

| CUR | CAD | IS | TEM | GS1 | GS2 |
|-----|-----|-------|-----|-----|-----|
| 40 | 3 | -4500 | 450 | 40 | 50 |

Injection Vol. : 5 μL

Sample : Standards (each 100 ng/mL)

Analyte:

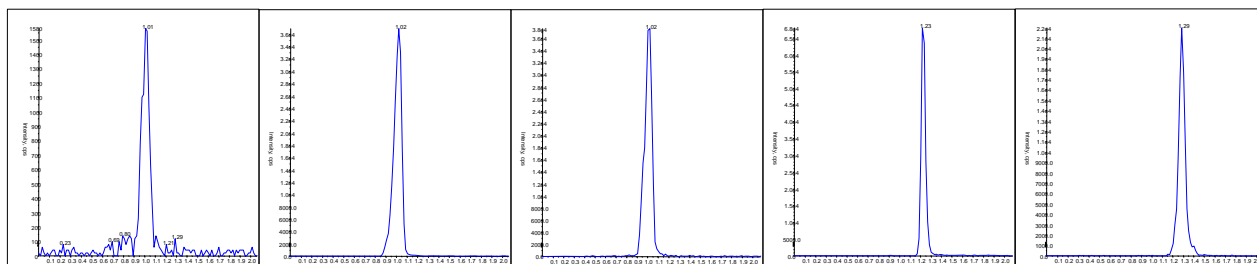
1. Naproxen
2. Loxoprofen
3. Ketoprofen
4. Salicylamide
5. Oxaprozin
6. Acemetacin
7. Diclofenac
8. Fenoprofen
9. Indomethacin
10. Flufenamic acid
11. Tolfenamic acid
12. Mefenamic acid
13. Ibuprofen

InertSearch™ for LC

Inertsil® Applications

Analysis of 13 drugs for NSAIDs

Data No. LB070-0894



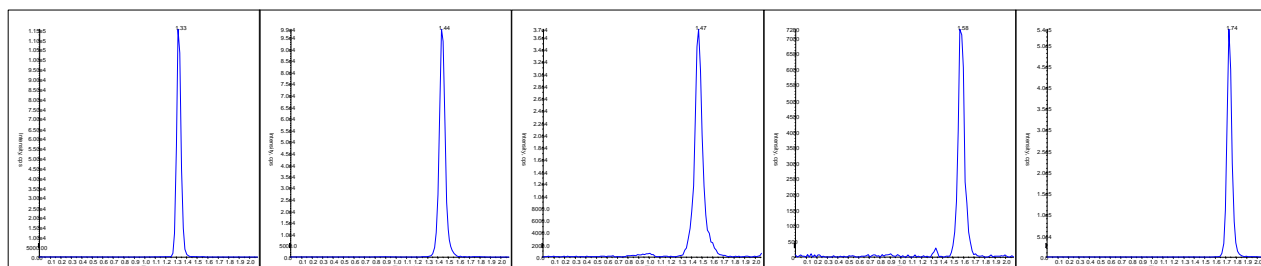
1. Naproxen

2. Loxoprofen

3. Ketoprofen

4. Salicylamide

5. Oxaprozin



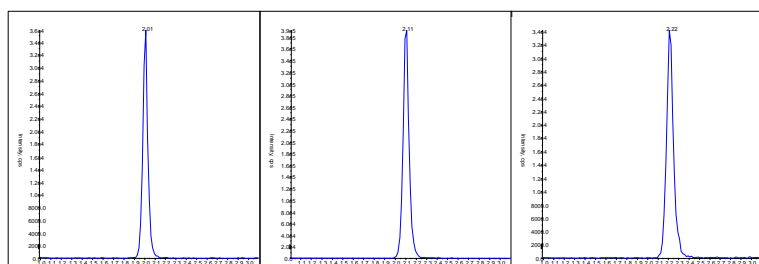
6. Acemetacin

7. Diclofenac

8. Fenoprofen

9. Indomethacin

10. Flufenamic acid



11. Tolfenamic acid

12. Mefenamic acid

13. Ibuprofen

| | Sample Name | R.T. | Q1 | Q3 | DP | EP | CE | CXP |
|----|-----------------|------|-----|-----|------|-----|-----|-----|
| 1 | Naproxen | 1.01 | 229 | 185 | -55 | -10 | -10 | -11 |
| 2 | Loxoprofen | 1.02 | 245 | 83 | -45 | -10 | -18 | -5 |
| 3 | Ketoprofen | 1.02 | 253 | 209 | -45 | -10 | -12 | -7 |
| 4 | Salicylamide | 1.23 | 136 | 118 | -50 | -10 | -20 | -5 |
| 5 | Oxaprozin | 1.29 | 292 | 220 | -105 | -10 | -30 | -19 |
| 6 | Acemetacin | 1.33 | 414 | 75 | -60 | -10 | -38 | -11 |
| 7 | Diclofenac | 1.44 | 294 | 250 | -40 | -10 | -16 | -1 |
| 8 | Fenoprofen | 1.47 | 241 | 197 | -30 | -10 | -12 | -9 |
| 9 | Indomethacin | 1.58 | 357 | 313 | -50 | -10 | -12 | -7 |
| 10 | Flufenamic acid | 1.74 | 280 | 236 | -70 | -10 | -26 | -11 |
| 11 | Tolfenamic acid | 2.01 | 261 | 217 | -45 | -10 | -24 | -19 |
| 12 | Mefenamic acid | 2.11 | 240 | 196 | -60 | -10 | -24 | -9 |
| 13 | Ibuprofen | 2.22 | 205 | 161 | -45 | -10 | -10 | -9 |