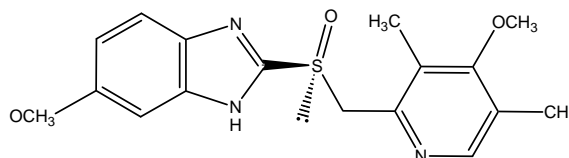
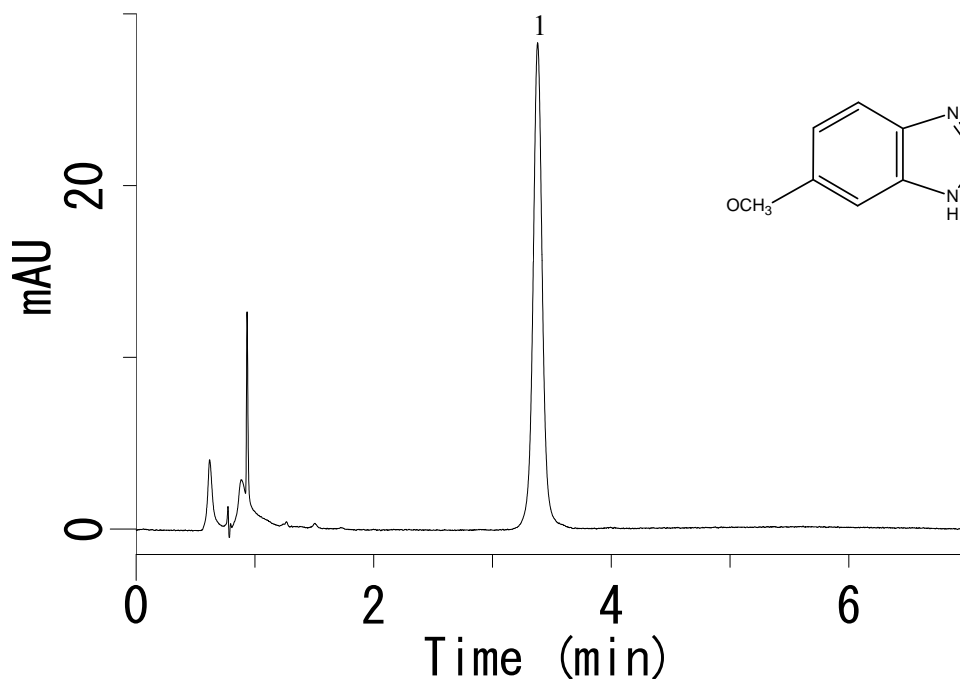


InertSearch™ for LC

Inertsil® Applications

Analysis of Esomeprazol (InertSustain C18)

Data No. LB071-0701



Conditions

Column : InertSustain C18 HP (3 µm, 50 x 4.6 mm I.D.)
Column Cat. No. : 5020-14442
Eluent : A) CH₃CN
 : B) Buffer*
 : A/B = 35/65, v/v
Flow rate : 1.0 mL/min
Col. Temp. : 30 °C
Detection : UV 280 nm
Injection Vol. : 9 µL
Sample : Standard (diluted with Diluent**)

Analyte:

1. Esomeprazole Mg (20 mg/L)

* Buffer: Dissolve 0.725 g of monobasic sodium phosphate and 4.472 g of anhydrous dibasic sodium phosphate in 300 mL of water, and dilute with water to 1000 mL. Dilute 250 mL of this solution with water to 1000 mL. If necessary, adjust with phosphoric acid to a pH of 7.6.

**Diluent: Mix 11 ml of 0.25 M tribasic sodium phosphate with 22 ml of 0.5 M dibasic sodium phosphate and dilute to 100 ml with water.