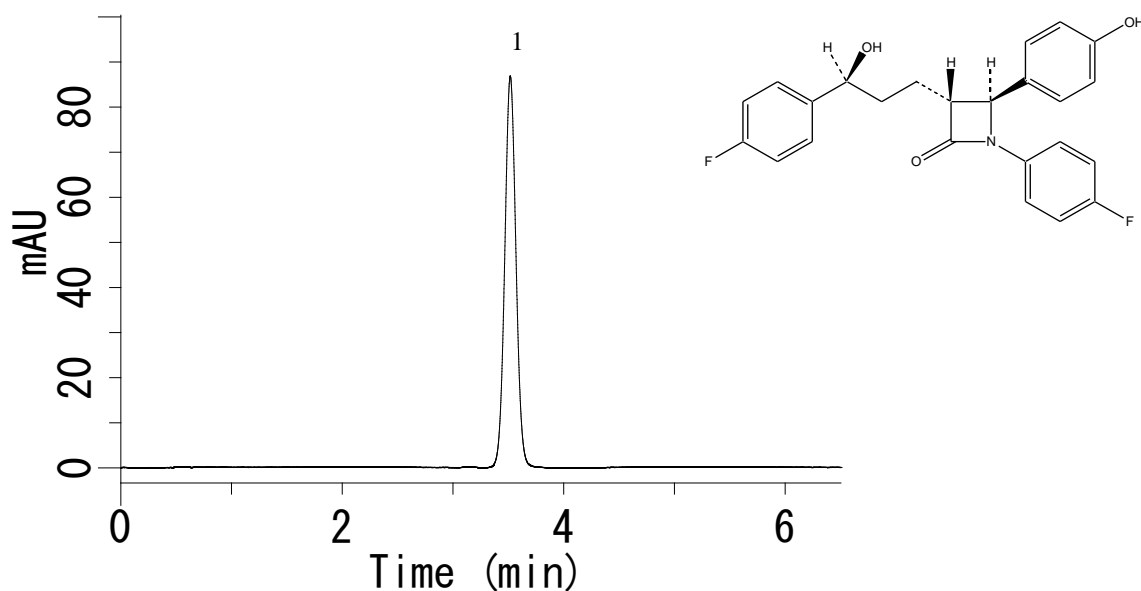


## Analysis of Ezetimibe (Inertsil C8-4)



### Conditions

**Column** : Inertsil C8-4 (3  $\mu$ m, 50 x 4.6 mm I.D.)  
**Column Cat. No.** : 5020-14078  
**Eluent** : A) CH<sub>3</sub>CN  
           : B) 20 mM KH<sub>2</sub>PO<sub>4</sub>  
           : A/B = 45/55, v/v  
**Flow rate** : 1.0 mL/min  
**Col. Temp.** : 30 °C  
**Detection** : UV 232 nm  
**Injection Vol.** : 5  $\mu$ L  
**Sample** : Standard (diluted with CH<sub>3</sub>OH/ 20 mM KH<sub>2</sub>PO<sub>4</sub> = 1/1, v/v)

### Analyte:

1. Ezetimibe (100 mg/L)