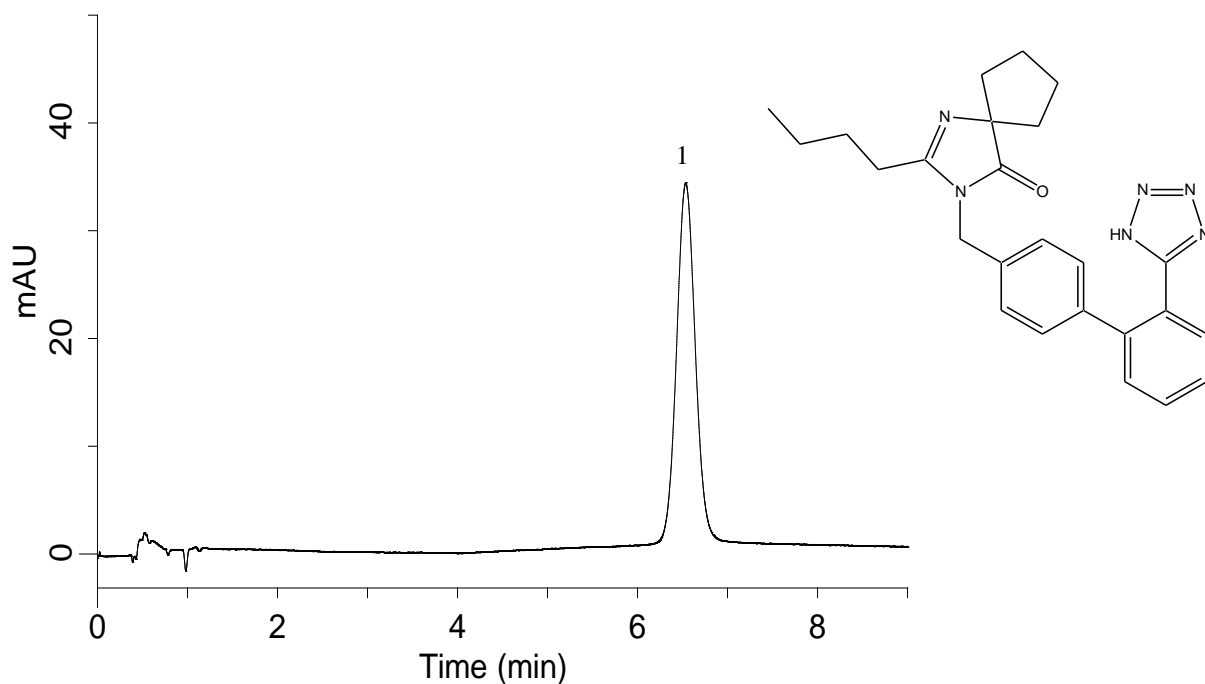


## Analysis of Irbesartan (Inertsil ODS-4)



### Conditions

**Column** : Inertsil ODS-4 HP (3  $\mu\text{m}$ , 50 x 4.6 mm I.D.)  
**Column Cat. No.** : 5020-14068  
**Eluent** : A)  $\text{CH}_3\text{CN}$   
           B) 10 g/L  $\text{H}_3\text{PO}_4$  (pH 3.2, Triethylamine)  
           A/B = 33/67, v/v  
**Flow rate** : 1.25 mL/min  
**Col. Temp.** : 25  $^\circ\text{C}$   
**Detection** : UV 220 nm  
**Injection Vol.** : 2  $\mu\text{L}$   
**Sample** : Standard (diluted with 50 %  $\text{CH}_3\text{CN}$ )

### Analyte:

1. Irbesartan (150 mg/L)