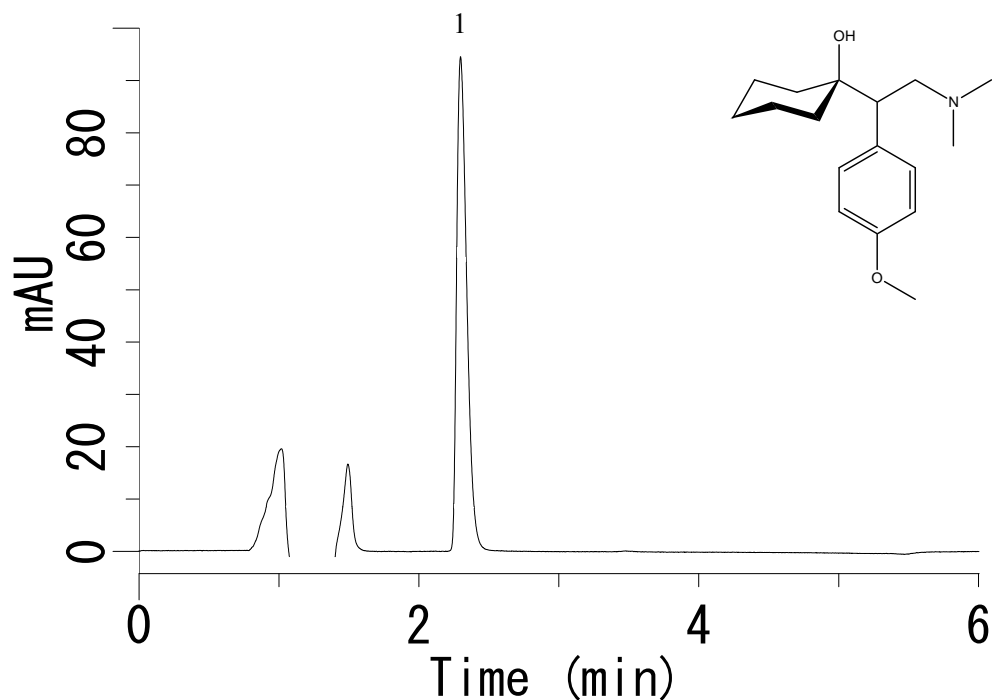


# InertSearch™ for LC

Inertsil® Applications

## Analysis of Venlafaxine (InertSustain C18)

Data No. LB075-0701



### Conditions

**Column** : InertSustain C18 HP (3  $\mu$ m, 100 x 4.6 mm I.D.)  
**Column Cat. No.** : 5020-14444  
**Eluent** : A) CH<sub>3</sub>CN  
          : B) Buffer\*  
          : A/B = 30/70, v/v  
**Flow rate** : 1.0 mL/min  
**Col. Temp.** : 25 °C  
**Detection** : UV 275 nm  
**Injection Vol.** : 10  $\mu$ L  
**Sample** : Standard (diluted with CH<sub>3</sub>OH/0.1N HCl = 4/1, v/v)

### Analyte:

1. Venlafaxine HCl (340 mg/L)

\* Buffer: 3.4 g of potassium dihydrogen phosphate in 700 mL of water. Add 5 mL of triethylamine, and adjust with phosphoric acid to a pH of 3.0.