

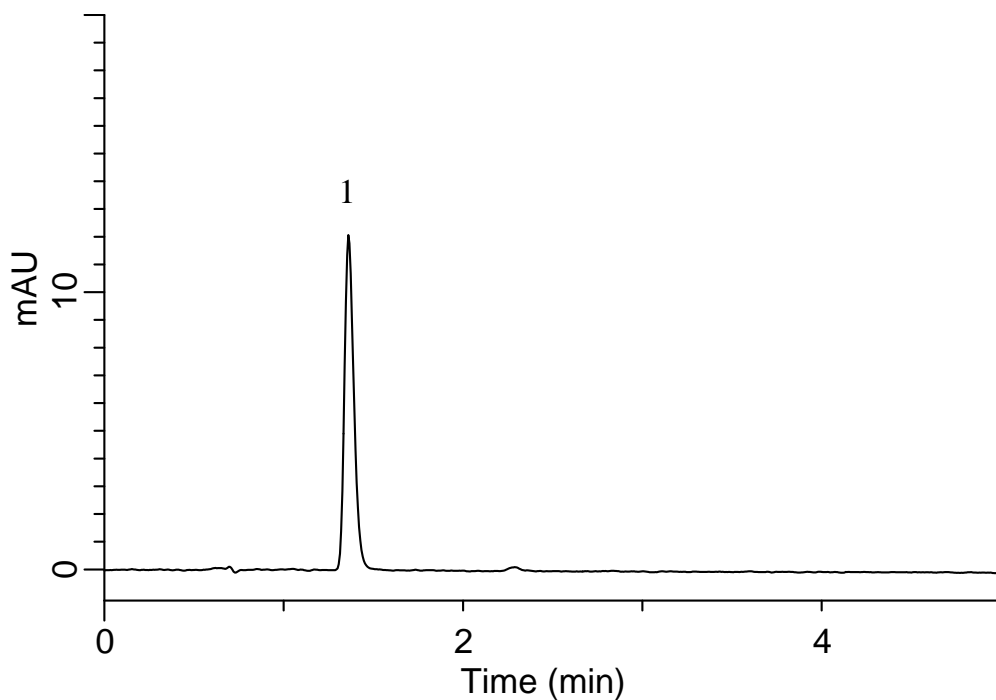
# InertSearch™ for LC

Inertsil® Applications

## Analysis of Sertraline hydrochloride

(Under the Condition of European Pharmacopoeia 7.0)

Data No. LB082-0894



### Conditions

**System** : GL-7400 HPLC system  
**Column** : Inertsil ODS-3  
(4  $\mu$  m, 150 x 4.0 mm I.D. )  
**Column Cat. No.** : 5020-04635  
**Eluent** : A) CH<sub>3</sub>CN  
B) CH<sub>3</sub>OH  
C) Buffer\*  
A/B/C = 45/15/40, v/v/v  
**Flow Rate** : 1.8 mL/min  
**Col. Temp.** : 30 °C  
**Detection** : UV 254 nm (GL-7452 PDA Detector)  
**Injection Vol.** : 20  $\mu$  L  
**Sample** : Standard

### Analyte:

1. Sertraline hydrochloride 55 mg/L

\* Buffer : To 28.6 mL of glacial acetic acid slowly add, while stirring and cooling, 34.8 mL of triethylamine, and dilute to 100 mL with water. Dilute 10 mL of this solution to 1000 mL with water.