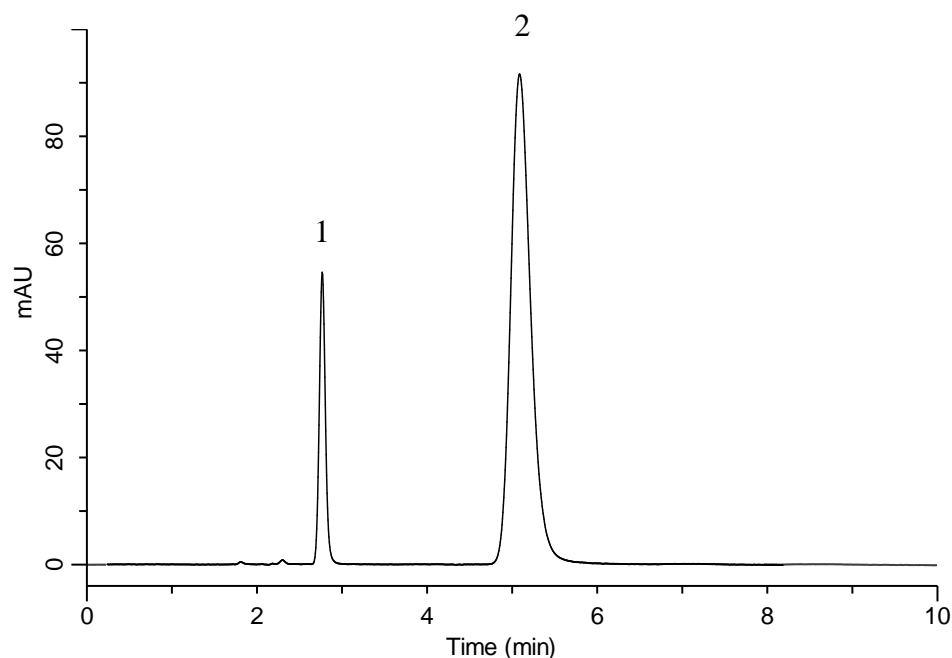


## Analysis of Ranitidine hydrochloride

(Under the Condition of Japanese Pharmacopoeia 16)



### Conditions

**System** : GL-7400 HPLC system  
**Column** : ODS  
 (10 $\mu$ m, 200 x 4.6 mm I.D.)  
**Column Cat. No.** : Custom-order  
**Eluent** : A) CH<sub>3</sub>OH  
 B) 100 mM CH<sub>3</sub>COONH<sub>4</sub>  
 A/B = 85/15, v/v  
**Flow Rate** : 1.4 mL/min  
**Col. Temp.** : 25 °C  
**Detection** : UV 322 nm (GL-7452 PDA Detector)  
**Injection Vol.** : 10  $\mu$ L  
**Sample** : Standard

### Analyte:

1. Benzaldehyde 25 mg/L  
 2. Ranitidine 100 mg/L

Resolution (1, 2) : 6.7 ( $\geq$  2.0)  
 RSD of the  
 peak area (%) (n=6) : 0.40 ( $\leq$  1.0)