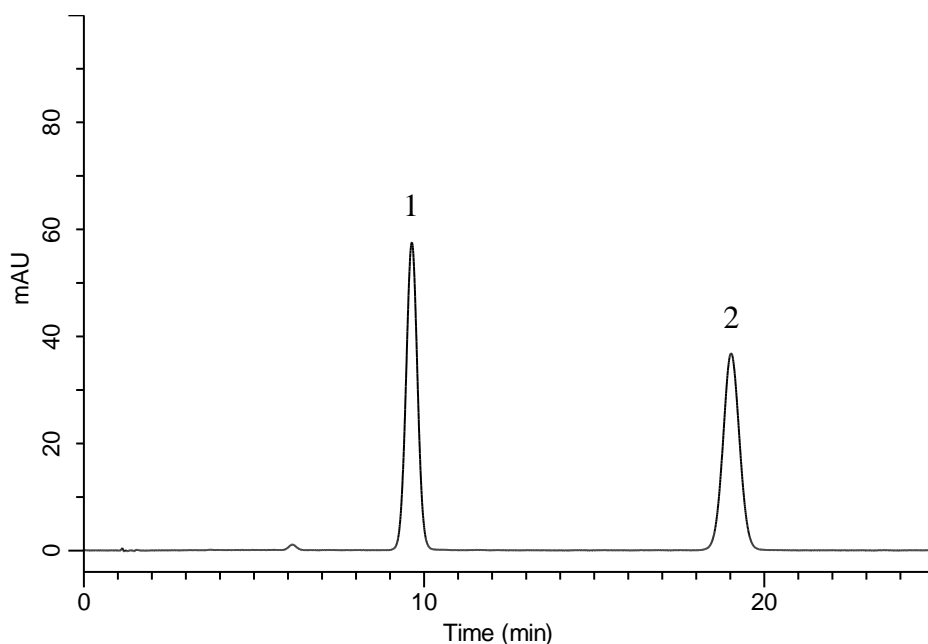


Analysis of Naftopidil

(Under the Condition of the Japanese Pharmacopoeia, Naftopidil Tablets)



Conditions

System : GL-7400 HPLC system
Column : InertSustain C18
 (5 μ m, 150 x 4.0 mm I.D.)
Column Cat. No. : 5020-07335
Eluent : A) CH₃OH
 B) Buffer*
 A/B = 55/45, v/v
Flow Rate : 1.0 mL/min
Col. Temp. : 25 °C
Detection : UV 283 nm (GL-7452 PDA Detector)
Injection Vol. : 10 μ L
Sample : Standard

Analyte:

1. Naftopidil 100 mg/L
 2. *p*-Hydroxybenzoic acid *n*-butyl ester 150 mg/L

Resolution (1, 2) : 12.3 (≥ 4)
 RSD of the peak
 area ratio of
 1 to 2 (%) (n=6) : 0.31 (≤ 1.0)

*Dissolve 6.80 g of monobasic potassium phosphate in 900 mL of water.
 Adjust pH 4.0 by diluted phosphoric acid.
 Add water to make up to 1000 mL.