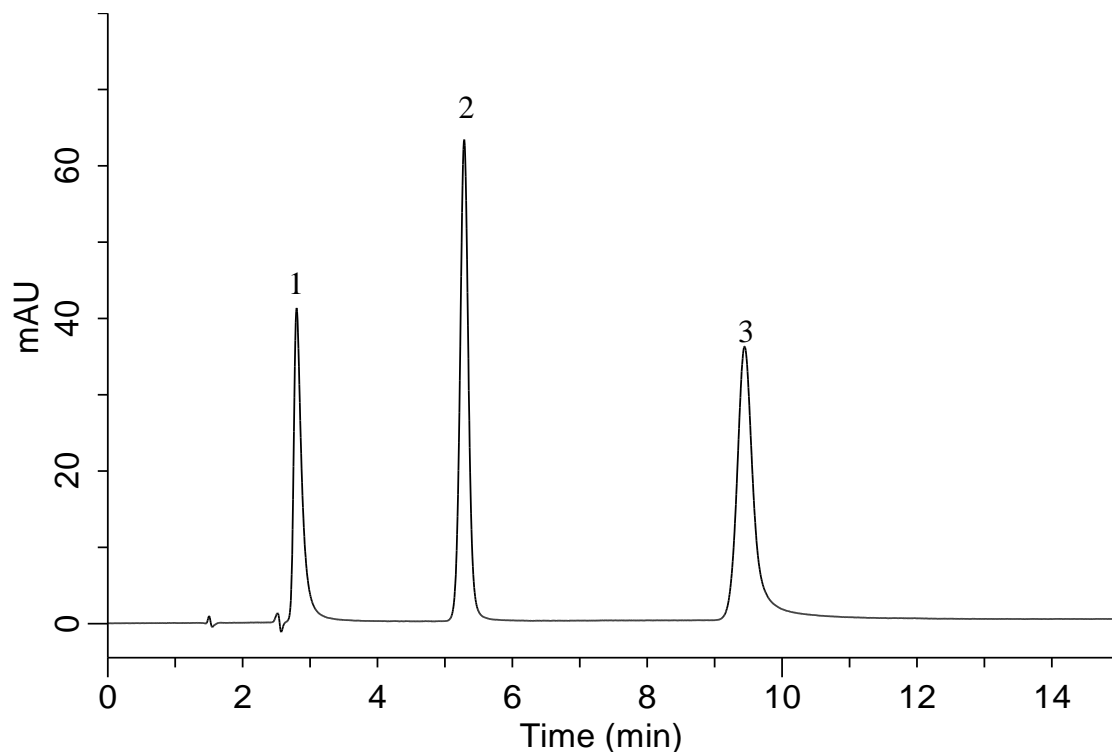


## Analysis Analysis of Phenylenediamine



### Conditions

**System** : LC800 HPLC system  
**Column** : Inertsil ODS-3 (5  $\mu$ m, 150 x 4.6 mm I.D.)  
**Column Cat. No.** : 5020-01731  
**Eluent** : A) 20 mM Na<sub>2</sub>HPO<sub>4</sub> (pH 6.0, H<sub>3</sub>PO<sub>4</sub>)  
           B) CH<sub>3</sub>CN  
           A/B = 95/5, v/v  
**Flow Rate** : 1.0 mL/min  
**Col. Temp.** : 40 °C  
**Detection** : UV 290 nm  
**Injection Vol.** : 10  $\mu$ L

### Analyte :

1. *p*-Phenylenediamine 50 mg/L  
 2. *m*-Phenylenediamine 50 mg/L  
 3. *o*-Phenylenediamine 50 mg/L