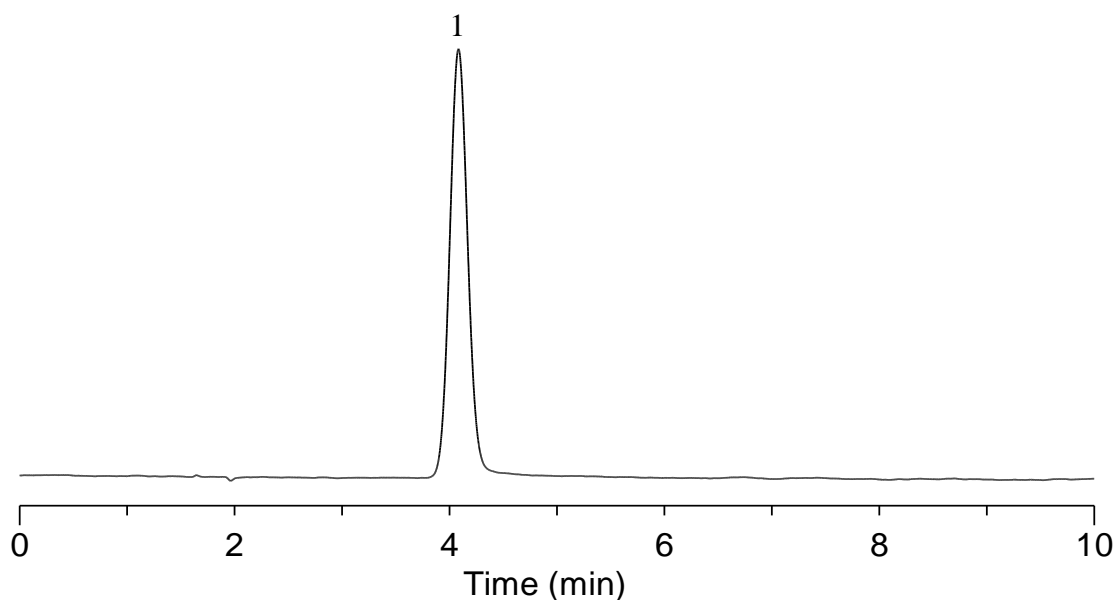


Analysis of Edaravone

(Under the Condition of the Japanese Pharmacopoeia)



Conditions

System : LC800 HPLC system
Column : Inertsil ODS-3 (5 μ m, 150 x 4.6 mm I.D.)
Column Cat. No. : 5020-01731
Eluent : A) CH₃OH
 : B) H₂O
 : C) CH₃COOH
 : A/B/C = 100/100/1, v/v/v
Flow Rate : 0.95 mL/min
Col. Temp. : 40 °C
Detection : UV 240 nm
Injection Vol. : 10 μ L

Analyte :

1. Edaravone

Theoretical plates : 2,723 (\geq 1,500)
 Tailing factor : 1.09 (\leq 1.4)