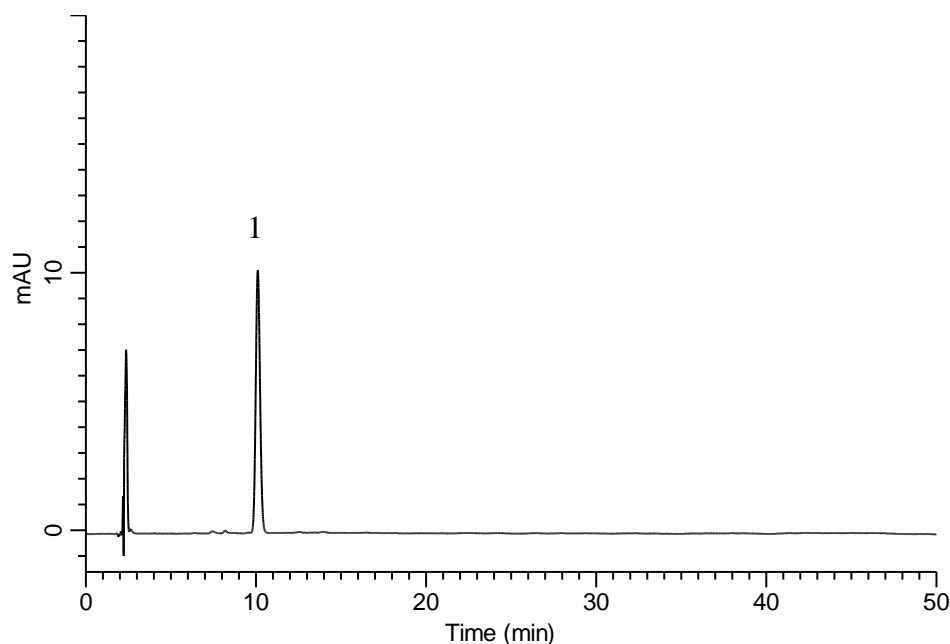


## Analysis of Pranlukast hydrate (Under the Condition of Japanese Pharmacopoeia)



### Conditions

**System** : GL-7400 HPLC system  
**Column** : InertSustain C8  
 (5 $\mu$ m, 150 x 6.0 mm I.D.)  
**Column Cat. No.** : 5020-16057  
**Eluent** : A) CH<sub>3</sub>CN  
 B) CH<sub>3</sub>OH  
 C) 20 mM KH<sub>2</sub>PO<sub>4</sub>  
 A/B/C = 5/1/5, v/v/v  
**Flow Rate** : 1.2 mL/min  
**Col. Temp.** : 25 °C  
**Detection** : UV 260 nm (GL-7452 PDA Detector)  
**Injection Vol.** : 10  $\mu$ L  
**Sample** : Standard

### Analyte:

1. Pranlukast hydrate 4 mg/L

Theoretical plates : 7,540 ( $\geq$  6,000)  
 Tailing factor : 1.11 ( $\leq$  1.5)  
 RSD of the  
 peak area (%) (n=6) : 0.44 ( $\leq$  2.0)