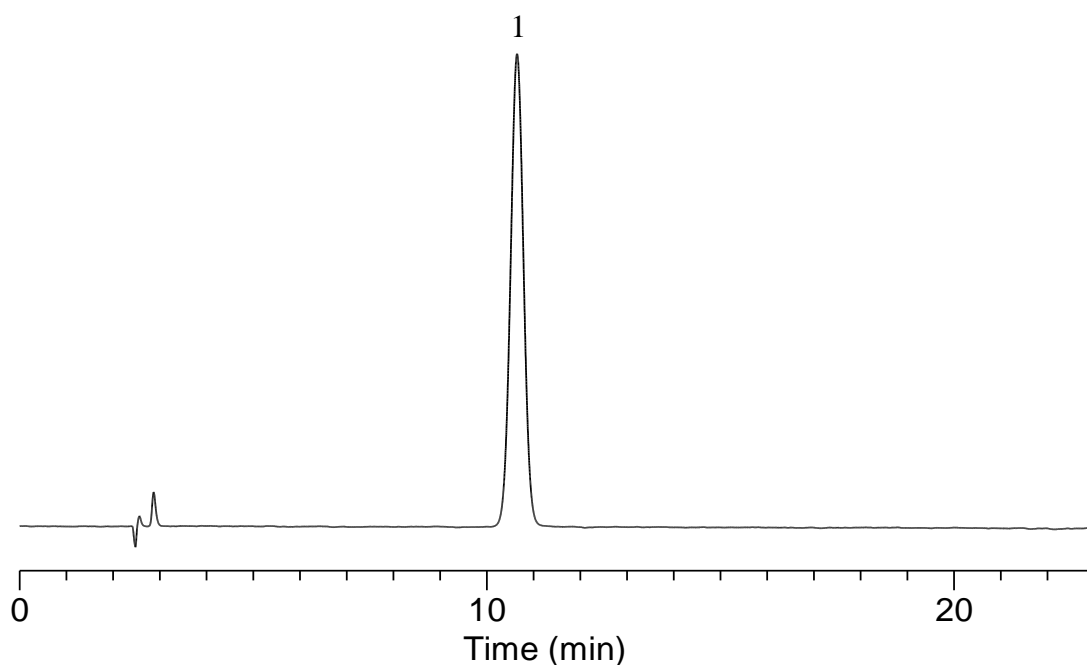


Analysis of Edaravone

(Under the Condition of the Japanese Pharmacopoeia)



Conditions

System : LC800 HPLC system
Column : Inertsil WP300 C18 (5 μ m, 150 x 4.6 mm I.D)
Column Cat. No. : 5020-05845
Eluent : A) CH₃OH
 : B) 0.1% CH₃COOH
 : A/B =100/300 ,v/v (pH 5.5, 1.4 % NH₃(aq))
Flow Rate : 0.75 mL/min
Col. Temp. : 40 °C
Detection : UV 240 nm
Injection Vol. : 10 μ L

Analyte :

1. Edaravone

Theoretical plates : 6,920 (\geq 2,000)
 Tailing factor : 1.01 (\leq 1.4)