

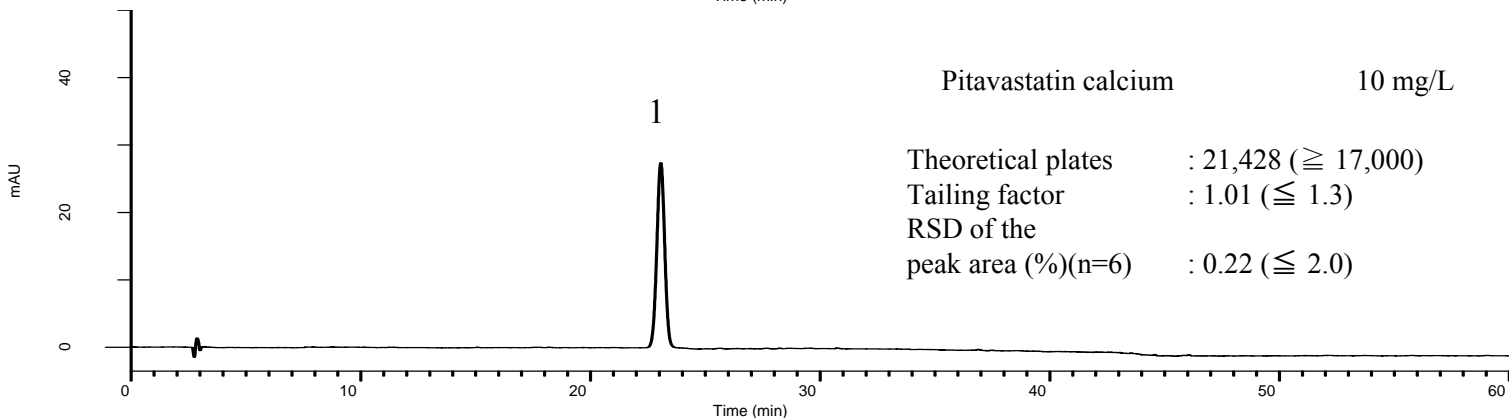
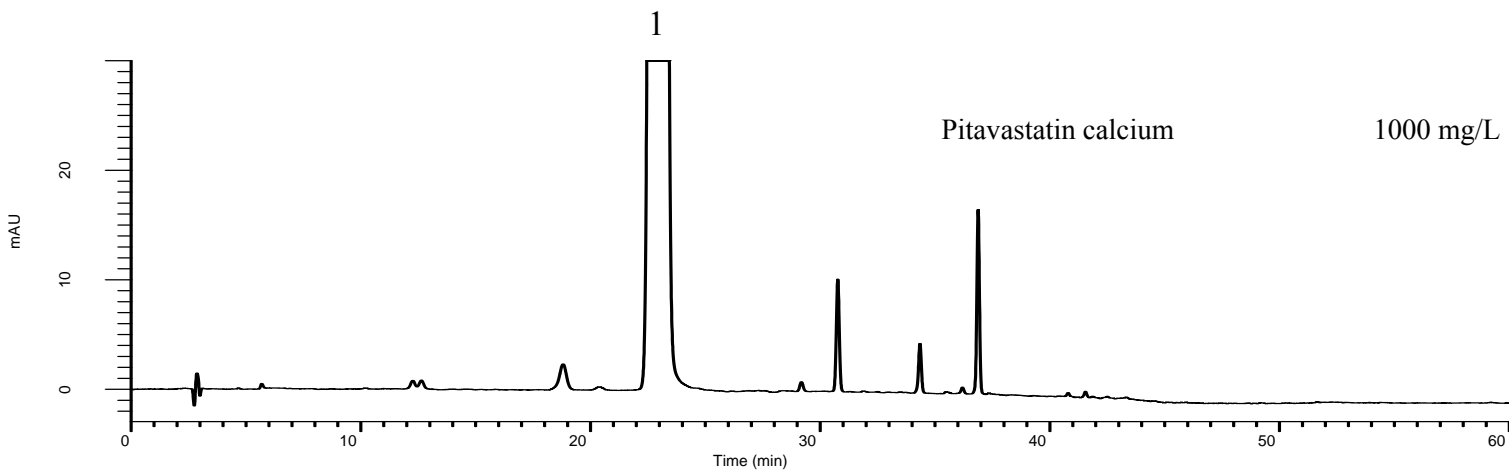
# InertSearch™ for LC

Inertsil® Applications

## Analysis of Pitavastatin calcium

(Under the Condition of the Japanese Pharmacopoeia, Pitavastatin calcium hydrate)

Data No. LB104-0894



### Conditions

**System** : GL-7400 HPLC system

**Column** : Inertsil ODS-4  
(5 $\mu$ m, 250 x 4.6 mm I.D.)

**Column Cat. No.** : 5020-03946

**Eluent** : A) CH<sub>3</sub>CN  
B) 10 mM CH<sub>3</sub>COOH in H<sub>2</sub>O/10 mM CH<sub>3</sub>COONa in H<sub>2</sub>O = 8/1 ,v/v

### Analyte:

1. Pitavastatin calcium

Time(min)	A(vol%)	B(vol%)
0~20	40	60
20~40	40→90	60→10
40~60	90	10

**Flow Rate** : 0.95 mL/min

**Col. Temp.** : 40 °C

**Detection** : UV 245 nm (GL-7452 PDA Detector)

**Injection Vol.** : 10  $\mu$ L

**Sample** : Standard