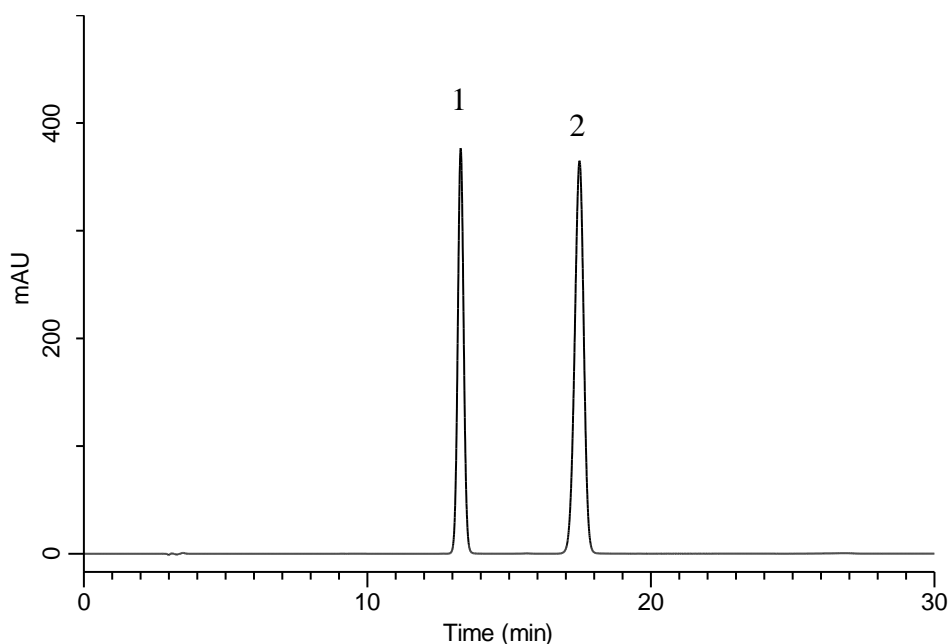


Analysis of Pitavastatin calcium



Conditions

System : GL-7400 HPLC system
Column : Inertsil ODS-4
 (5 μ m, 250 x 4.6 mm I.D.)
Column Cat. No. : 5020-03946
Eluent : A) CH₃OH
 B) 10 mM CH₃COOH in H₂O
 A/B = 65/35, v/v + 0.29 g/L NaCl
Flow Rate : 0.9 mL/min
Col. Temp. : 40 °C
Detection : UV 245 nm (GL-7452 PDA Detector)
Injection Vol. : 10 μ L
Sample : Standard

Analyte:

1. *p*-Hydroxy benzoic acid *n*-butyl ester 150 mg/L
 2. Pitavastatin calcium 120 mg/L

Resolution (1, 2) : 8.6