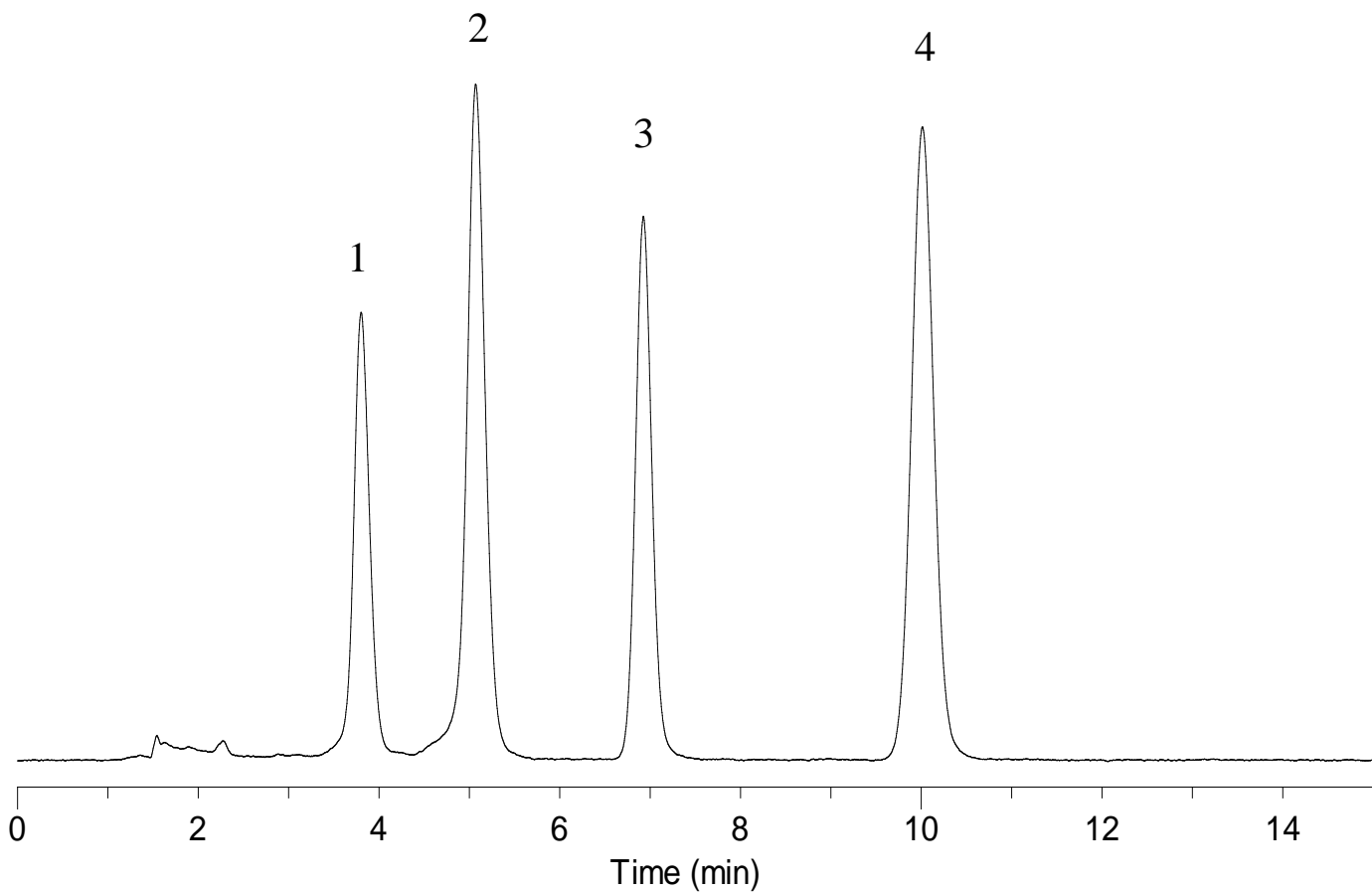


## Analysis of Pre-column Derivatized Aflatoxin



### Conditions

**System** : GL-7400 system  
**Column** : InertSustain C18 (5 μm, 150 x 4.6 mm I.D.)  
**Eluent** : A) CH<sub>3</sub>OH  
 B) CH<sub>3</sub>CN  
 C) H<sub>2</sub>O  
 A/B/C = 30/10/60, v/v/v (Premix)  
**Flow rate** : 1.0 mL/min  
**Col. Temp.** : 40°C  
**Detection** : FL Ex. 365 nm, Em. 450 nm (GL-7453A FL Detector)  
**Injection Vol.** : 20 μL  
**Sample** : Aflatoxin derivatized with trifluoroacetic acid

### Analyte:

1. Aflatoxin G1	5 ng/mL
2. Aflatoxin B1	5 ng/mL
3. Aflatoxin G2	5 ng/mL
4. Aflatoxin B2	5 ng/mL