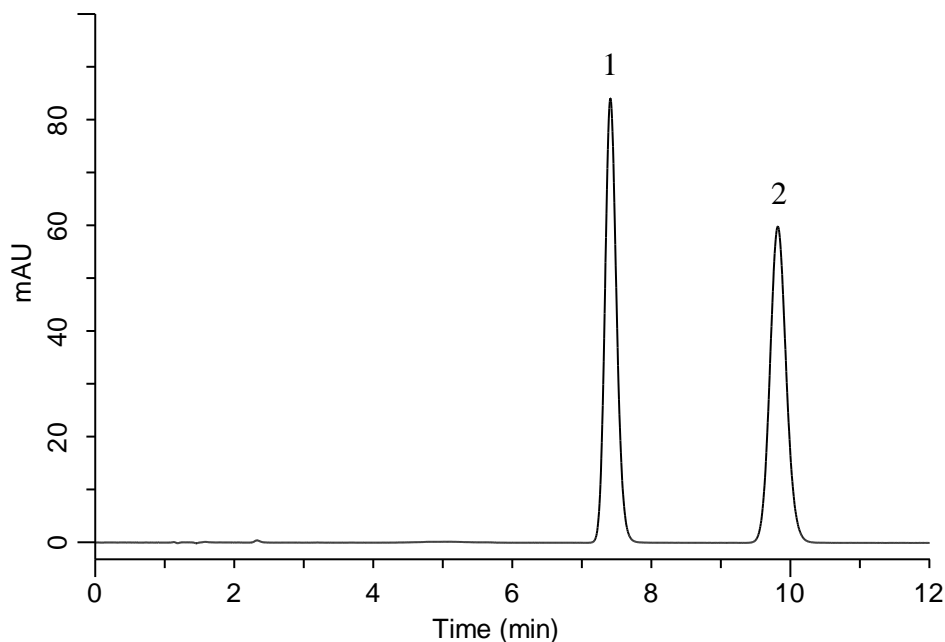


Analysis of Sivelestat sodium hydrate

(Under the Condition of the Japanese Pharmacopoeia)



Conditions

System : GL-7400 HPLC system
Column : InertSustain C18
 (5 μ m, 150 x 4.6 mm I.D.)
Column Cat. No. : 5020-07345
Eluent : A) CH₃CN
 B) 5.44 g/L KH₂PO₄ in H₂O (pH 3.5, H₃PO₄)
 A/B = 4/5, v/v
Flow Rate : 1.0 mL/min
Col. Temp. : 25 °C
Detection : UV 240 nm (GL-7452 PDA Detector)
Injection Vol. : 10 μ L
Sample : Standard

Analyte:

1. *p*-Hydroxybenzoic acid *n*-propyl ester
 2. Sivelestat sodium hydrate

Resolution (1, 2) : 6.6 (≥ 5)
 RSD of the peak
 area ratio of
 2 to 1 (%) (n=6) : 0.44 (≤ 1.0)