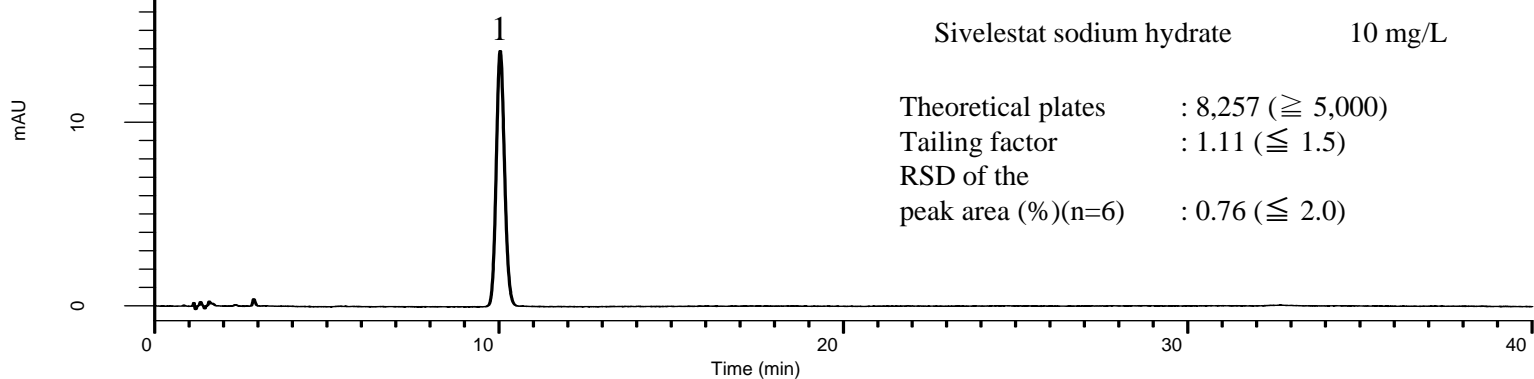
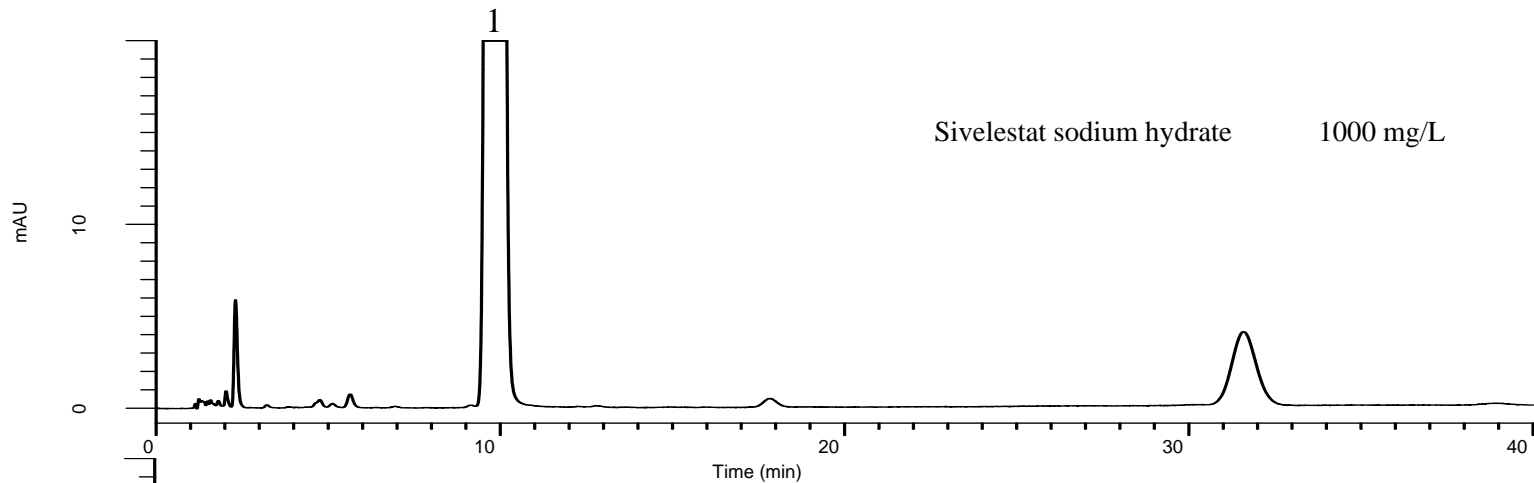


Analysis of Sivelestat sodium hydrate

(Under the Condition of the Japanese Pharmacopoeia)

Data No. LB112-0919



Conditions

System : GL-7400 HPLC system
Column : InertSustain C18
(5 μ m, 150 x 4.6 mm I.D.)
Column Cat. No. : 5020-07345
Eluent : A) CH₃CN
B) 5.44 g/L KH₂PO₄ in H₂O (pH 3.5, H₃PO₄)
A/B = 4/5, v/v
Flow Rate : 1.0 mL/min
Col. Temp. : 25 °C
Detection : UV 220 nm (GL-7452 PDA Detector)
Injection Vol. : 10 μ L
Sample : Standard

Analyte:

1. Sivelestat sodium hydrate