

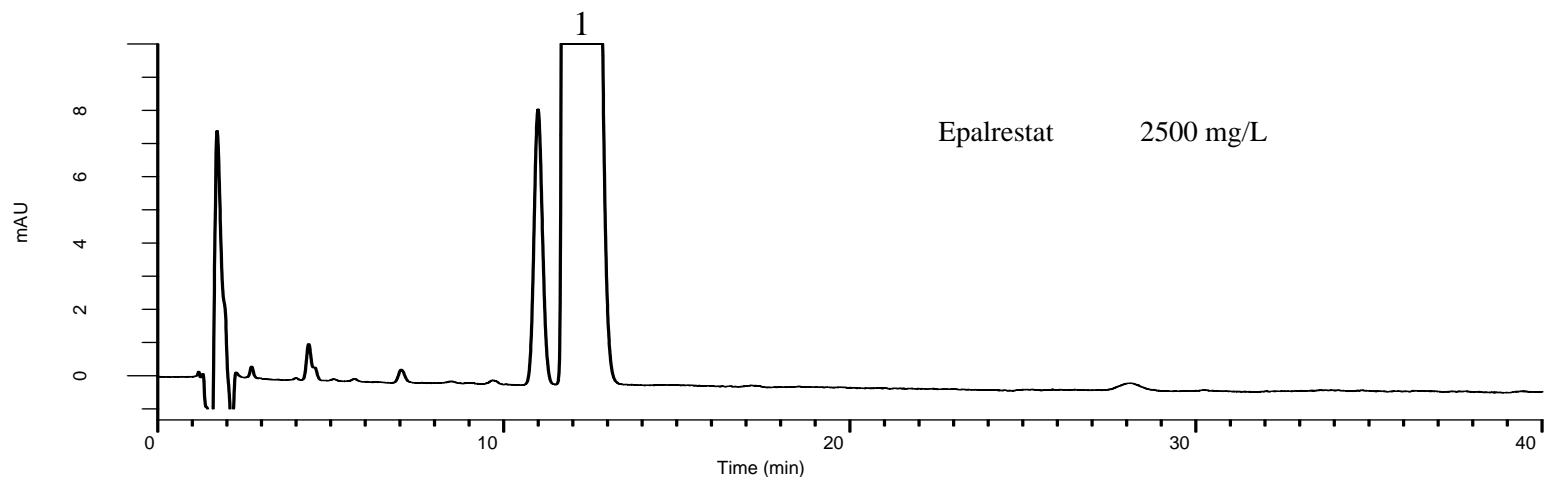
# InertSearch™ for LC

Inertsil® Applications

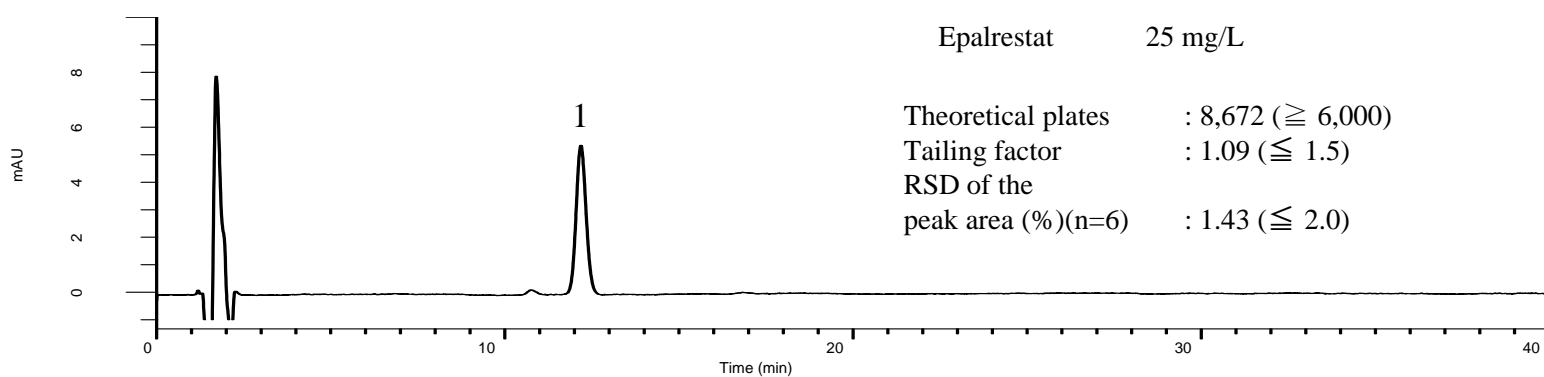
## Analysis of Epalrestat

(Under the Condition of the Japanese Pharmacopoeia)

Data No. LB114-0919



Epalrestat 2500 mg/L



Epalrestat 25 mg/L

Theoretical plates : 8,672 ( $\geq 6,000$ )  
Tailing factor : 1.09 ( $\leq 1.5$ )  
RSD of the peak area (%) (n=6) : 1.43 ( $\leq 2.0$ )

### Conditions

**System** : GL-7400 HPLC system  
**Column** : InertSustain C18  
(5  $\mu$  m, 150 x 4.6 mm I.D.)  
**Column Cat. No.** : 5020-07345  
**Eluent** : A) CH<sub>3</sub>CN  
B) 0.05 mol/L KH<sub>2</sub>PO<sub>4</sub> in H<sub>2</sub>O  
(pH 6.5, 0.05 mol/L Na<sub>2</sub>HPO<sub>4</sub> in H<sub>2</sub>O )  
A/B = 1/2, v/v  
**Flow Rate** : 1.0 mL/min  
**Col. Temp.** : 25 °C  
**Detection** : UV 280 nm (GL-7452 PDA Detector)  
**Injection Vol.** : 3  $\mu$  L  
**Sample** : Standard

### Analyte:

1. Epalrestat