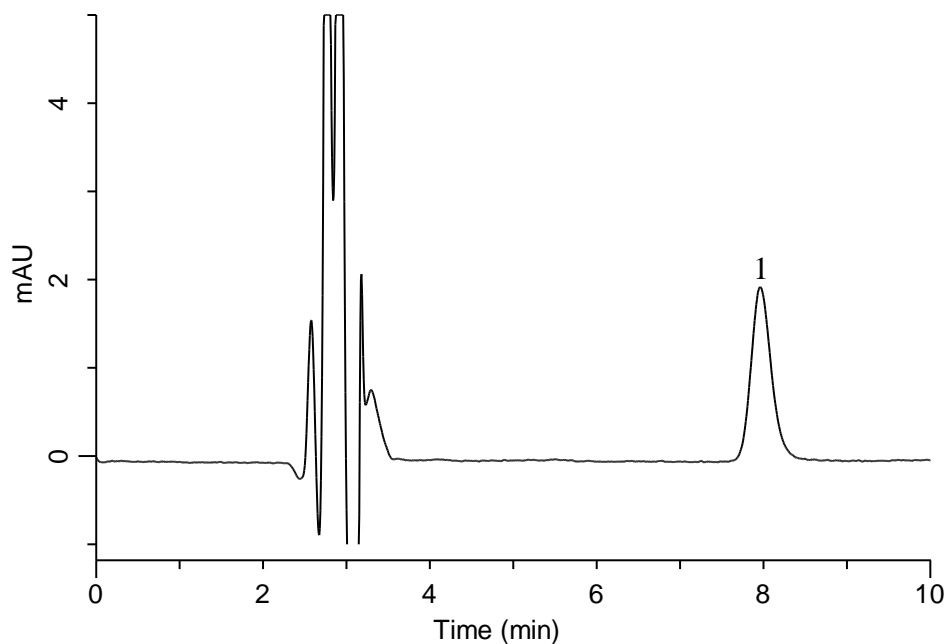


## Analysis of Mecobalamin

(Under the Condition of the Japanese Pharmacopoeia, Mecobalamin Tablets)



### Conditions

**System** : GL-7400 HPLC system  
**Column** : Inertsil ODS-4  
 (5  $\mu$  m, 150 x 4.6 mm I.D.)  
**Column Cat. No.** : 5020-03945  
**Eluent** : A) CH<sub>3</sub>OH  
 B) 40 mM L-Tartaric acid in H<sub>2</sub>O  
 (pH 3.0, 40mM Na<sub>2</sub>HPO<sub>4</sub> · 12H<sub>2</sub>O in H<sub>2</sub>O)  
 A/B = 37/63, v/v  
**Flow Rate** : 0.6 mL/min  
**Col. Temp.** : 40 °C  
**Detection** : UV 264 nm (GL-7452 PDA Detector)  
**Injection Vol.** : 100  $\mu$  L  
**Sample** : Standard

### Analyte:

1. Mecobalamin 0.28 mg/L

Theoretical plates : 5,196 ( $\geq$  3,000)  
 Tailing factor : 1.20 ( $\leq$  1.5)  
 RSD of the  
 peak area (%) (n=6) : 1.77 ( $\leq$  2.0)