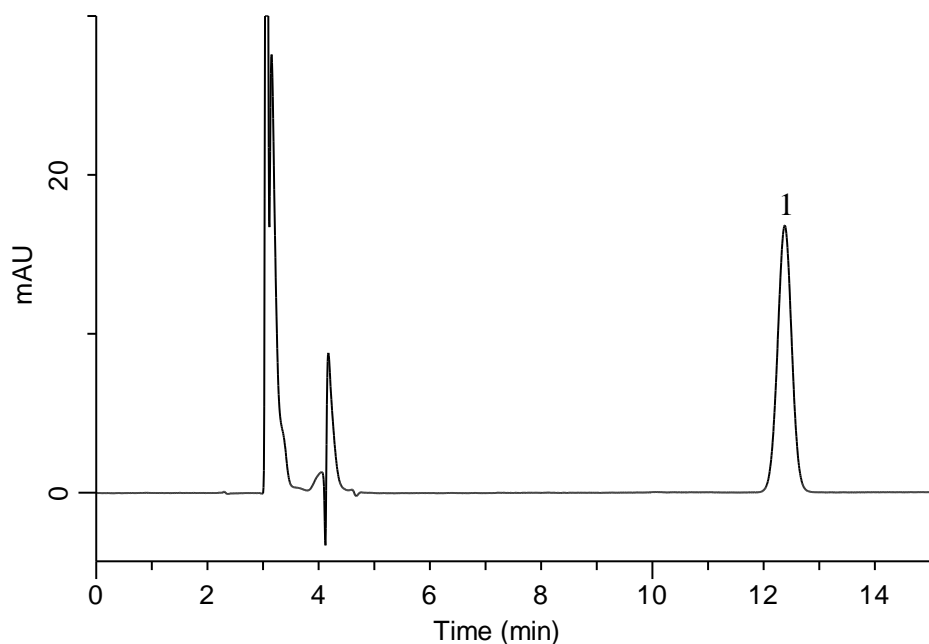


Analysis of Mecobalamin

(Under the Condition of the Japanese Pharmacopoeia, Mecobalamin Tablets)



Conditions

System : GL-7400 HPLC system
Column : Inertsil ODS-4
 (5 μ m, 250 x 4.6 mm I.D.)
Column Cat. No. : 5020-03946
Eluent : A) CH₃CN
 B) 20 mM Na₂HPO₄ · 2H₂O (pH 3.5, H₃PO₄)
 A/B = 20/80, v/v + 5 mM IPCC-06
 (IPCC-06: Sodium 1-Hexanesulfonate)
Flow Rate : 0.9 mL/min
Col. Temp. : 40 °C
Detection : UV 266 nm (GL-7452 PDA Detector)
Injection Vol. : 10 μ L
Sample : Standard

Analyte:

1. Mecobalamin 50 mg/L

Theoretical plates : 11,038 ($\geq 3,000$)
 Tailing factor : (0.8 \leq) 1.00 (≤ 1.1)
 RSD of the
 peak area (%) (n=6) : 0.63 (≤ 1.0)