

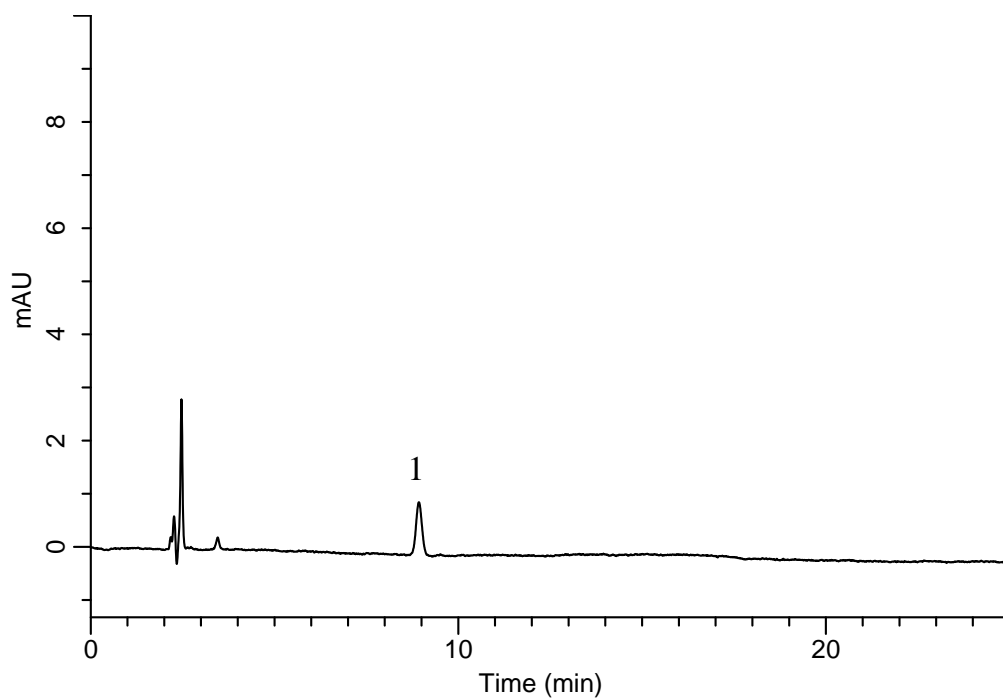
# InertSearch™ for LC

Inertsil® Applications

## Analysis of Simvastatin

(Under the Condition of the Japanese Pharmacopoeia, Simvastatin Tablets)

Data No. LB121-0894



### Conditions

**System** : GL-7400 HPLC system  
**Column** : Inertsil WP300 C18  
(5  $\mu$  m, 250 x 4.6 mm I.D.)  
**Column Cat. No.** : 5020-05846  
**Eluent** : A) CH<sub>3</sub>CN  
B) Buffer\*  
A/B = 65/35, v/v  
**Flow Rate** : 1.2 mL/min  
**Col. Temp.** : 45 °C  
**Detection** : UV 238 nm (GL-7452 PDA Detector)  
**Injection Vol.** : 10  $\mu$  L  
**Sample** : Standard

### Analyte:

1. Simvastatin 0.5 mg/L

Theoretical plates : 14,353 ( $\geq$  6,000)  
Tailing factor : (0.9  $\leq$ ) 1.05 ( $\leq$  1.1)  
RSD of the peak area (%) (n=6) : 0.89 ( $\leq$  2.0)

\* Dissolve 3.90 g of Sodium dihydrogen phosphate dihydrate in 900 mL of water.  
Adjust pH 4.5 by phosphoric acid.  
Add water to make 1000 mL.