

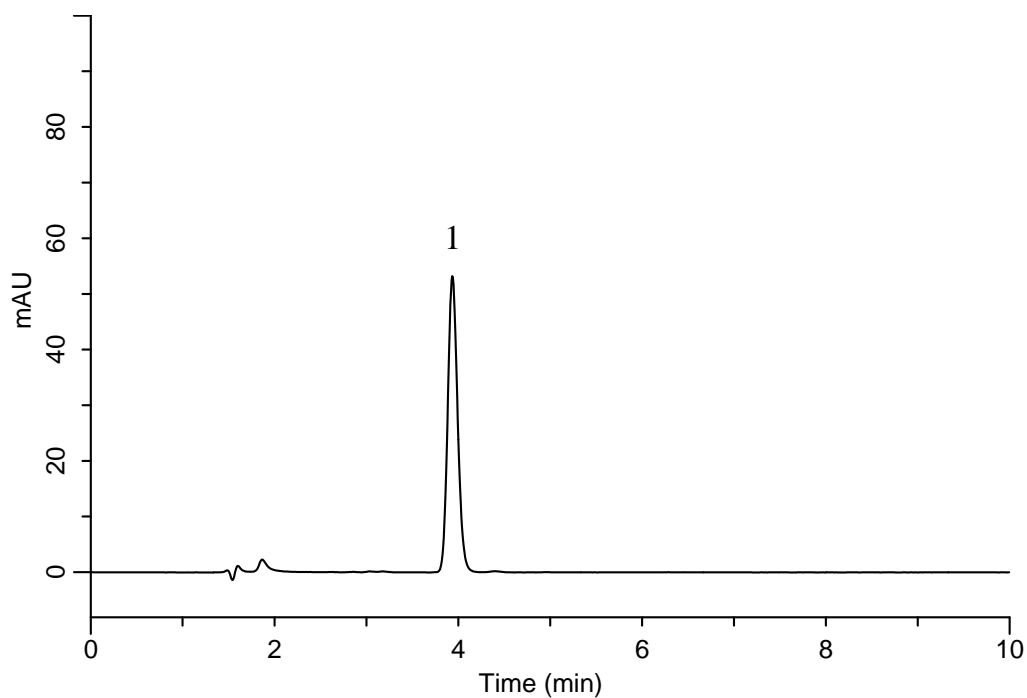
InertSearch™ for LC

Inertsil® Applications

Analysis of Simvastatin

(Under the Condition of the Japanese Pharmacopoeia, Simvastatin Tablets)

Data No. LB122-0894



Conditions

System : GL-7400 HPLC system
Column : Inertsil WP300 C18
(5 μ m, 150 x 3.9 mm I.D.)
Column Cat. No. : 5020-
Eluent : A) CH₃OH
B) 20 mM KH₂PO₄
A/B = 80/20, v/v
Flow Rate : 0.95 mL/min
Col. Temp. : 50 °C
Detection : UV 238 nm (GL-7452 PDA Detector)
Injection Vol. : 20 μ L
Sample : Standard

Analyte:

1. Simvastatin 5.5 mg/L

Theoretical plates : 6,485 (\geq 3,000)
Tailing factor : 1.14 (\leq 2.0)
RSD of the peak area (%) (n=6) : 0.19 (\leq 1.0)