

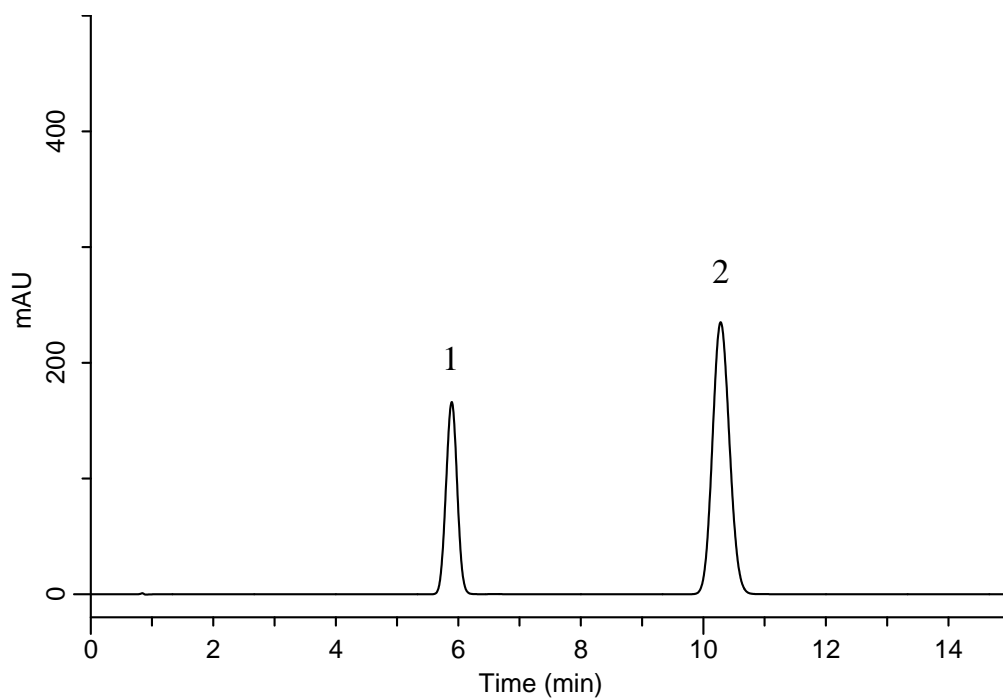
InertSearch™ for LC

Inertsil® Applications

Analysis of Ipriflavone

(Under the Condition of the Japanese Pharmacopoeia)

Data No. LB123-0894



Conditions

System : GL-7400 HPLC system
Column : InertSustain C8
(5 μ m, 150 x 4.0 mm I.D.)
Column Cat. No. : 5020-16020
Eluent : A) CH₃CN
B) H₂O
A/B = 60/40, v/v
Flow Rate : 1.1 mL/min
Col. Temp. : 25 °C
Detection : UV 280 nm (GL-7452 PDA Detector)
Injection Vol. : 20 μ L
Sample : Standard

Analyte:

1. Ipriflavone 60 mg/L
2. Di-*n*-butyl phthalate 1050 mg/L

Resolution (1, 2) : 10.3 (≥ 3)
RSD of the peak
area ratio of
1 to 2 (%) (n=6) : 0.07 (≤ 1.0)