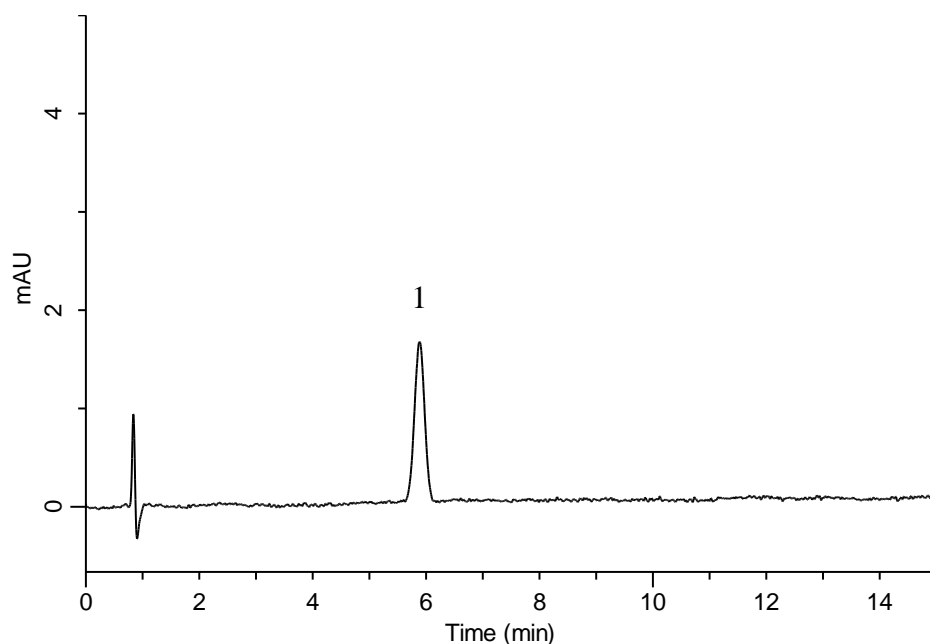


Analysis of Ipriflavone

(Under the Condition of the Japanese Pharmacopoeia)



Conditions

System : GL-7400 HPLC system
Column : InertSustain C8
 (5 μ m, 150 x 4.0 mm I.D.)
Column Cat. No. : 5020-16020
Eluent : A) CH₃CN
 B) H₂O
 A/B = 60/40, v/v
Flow Rate : 1.1 mL/min
Col. Temp. : 25 °C
Detection : UV 280 nm (GL-7452 PDA Detector)
Injection Vol. : 20 μ L
Sample : Standard

Analyte:

1. Ipriflavone 0.6 mg/L

Theoretical plates : 4,756 (\geq 2,000)
 Tailing factor : 1.02 (\leq 1.5)
 RSD of the
 peak area %(n=6) : 1.46 (\leq 2.0)