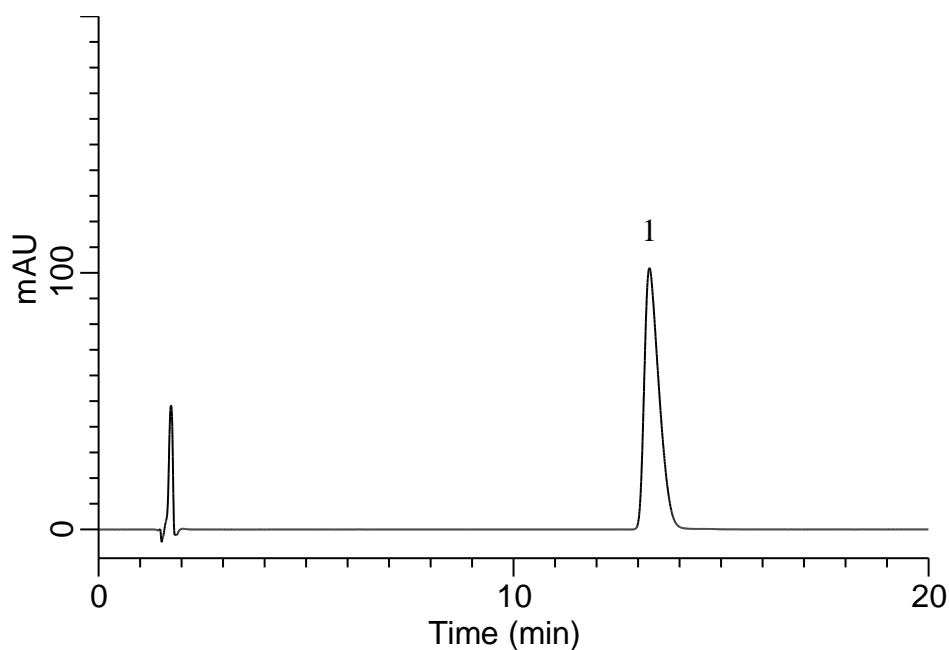


Analysis of Risperidone

(Under the Condition of the Japanese Pharmacopoeia, Risperidone Tablets)



Conditions

System : GL-7400 HPLC system
Column : Inertsil WP300 C18
 (3.5 μ m, 150 x 3.0 mm I.D.)
Column Cat. No. : 5020-87034
Eluent : A) CH₃CN
 B) H₂O
 C) CF₃COOH
 A/B = 200/800/1.5, v/v/v (pH3.0, NH₄OH(28))
Flow Rate : 0.55 mL/min
Col. Temp. : 25 °C
Detection : UV 275 nm (GL-7452 PDA Detector)
Injection Vol. : 10 μ L
Sample : Standard

Analyte:

1. Risperidone 100 mg/L

 Theoretical plates : 6,654 (\geq 4,000)
 Tailing factor : 1.62 (\leq 2.5)
 RSD of the
 peak area (%) (n=6) : 0.16 (\leq 1.0)