

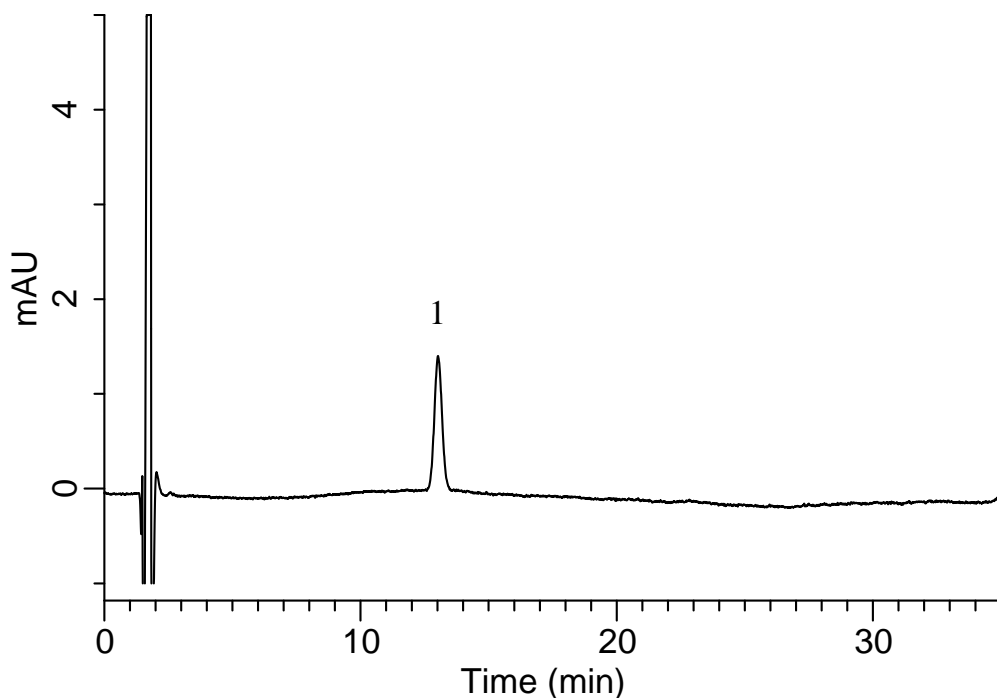
# InertSearch™ for LC

Inertsil® Applications

## Analysis of Risperidone

(Under the Condition of the Japanese Pharmacopoeia, Risperidone Tablets)

Data No. LB126-0894



### Conditions

**System** : GL-7400 HPLC system  
**Column** : Inertsil WP300 C18  
(3.5  $\mu$  m, 150 x 3.0 mm I.D.)  
**Column Cat. No.** : 5020-87034  
**Eluent** : A) CH<sub>3</sub>CN  
B) H<sub>2</sub>O  
C) CF<sub>3</sub>COOH  
A/B = 200/800/1.5, v/v/v (pH3.0, NH<sub>4</sub>OH)  
**Flow Rate** : 0.55 mL/min  
**Col. Temp.** : 25 °C  
**Detection** : UV 275 nm (GL-7452 PDA Detector)  
**Injection Vol.** : 10  $\mu$  L  
**Sample** : Standard

### Analyte:

1. Risperidone 1 mg/L

Theoretical plates : 9,179 ( $\geq$  4,000)  
Tailing factor : 1.10 ( $\leq$  2.5)  
RSD of the  
peak area (%) (n=6) : 0.93 ( $\leq$  2.5)