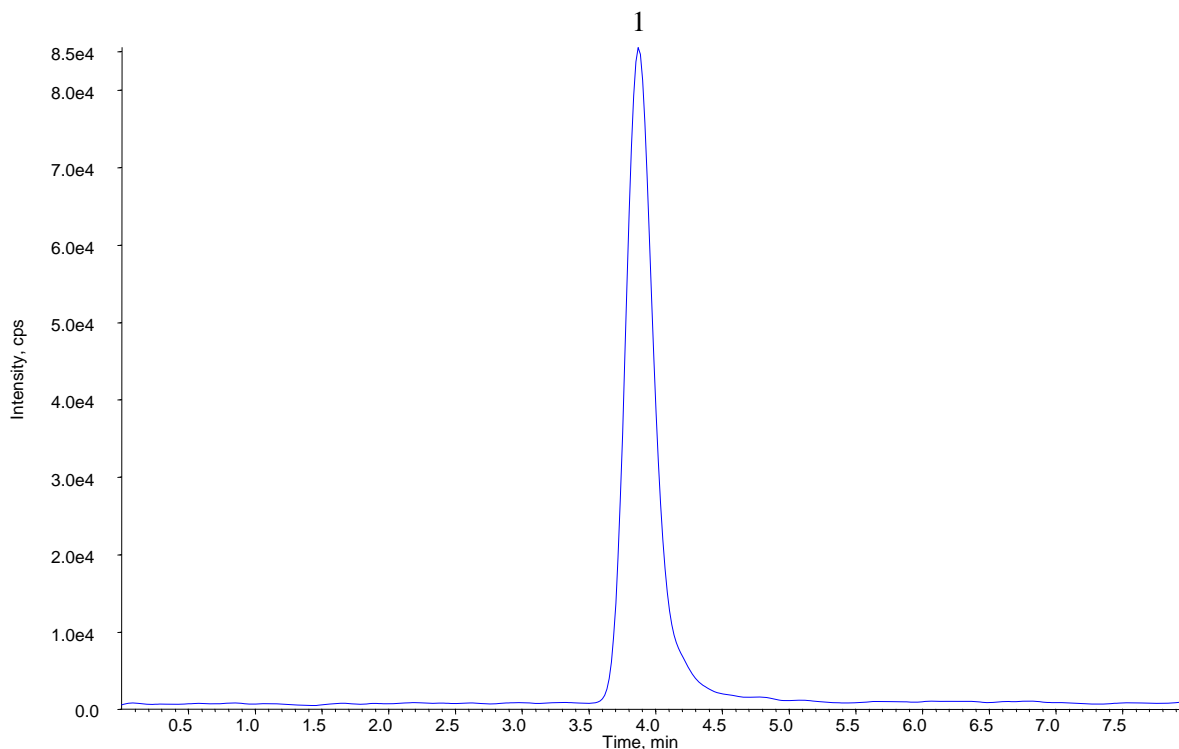


# InertSearch™ for LC

Inertsil® Applications

## Analysis of Amantadine

Data No. LB129-0848



### Conditions

**System** : LC800 HPLC system  
4000 QTRAP®

**Column** : Inertsil HILIC (3  $\mu$  m, 150 x 3.0 mm I.D.)

**Column Cat. No.** : 5020-07775

**Eluent** : A) CH<sub>3</sub>CN  
B) 10 mM CH<sub>3</sub>COOH in H<sub>2</sub>O  
A/B = 70/30, v/v

**Flow rate** : 0.4 mL/min

**Col. Temp.** : 40 °C

**Detection** : LC/MS/MS (4000 QTRAP® : ESI, Positive, MRM)

|     |     |      |     |     |
|-----|-----|------|-----|-----|
| CUR | CAD | IS   | TEM | ihe |
| 10  | 8   | 5000 | 550 | on  |

**Injection Vol.** : 5  $\mu$  L

### Analyte:

|               | Q1  | Q3    | DP | CE |
|---------------|-----|-------|----|----|
| 1. Amantadine | 152 | 135.1 | 67 | 17 |