

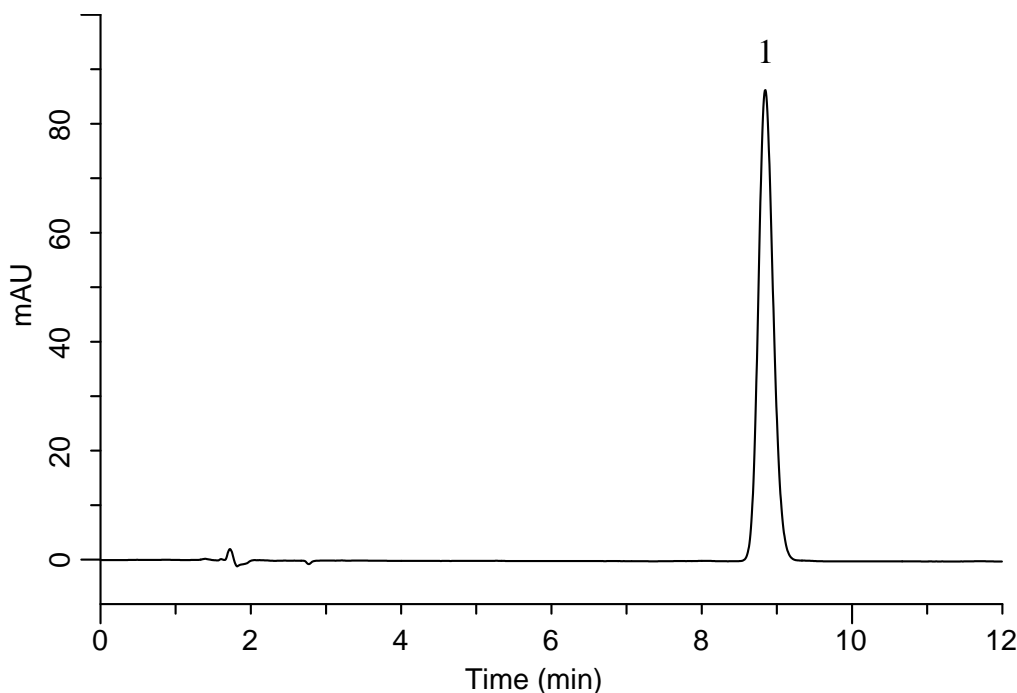
InertSearch™ for LC

Inertsil® Applications

Analysis of Fexofenadine hydrochloride

(Under the Condition of the Japanese Pharmacopoeia)

Data No. LB133-0919



Conditions

System : GL-7400 HPLC system

Column : Inertsil Ph
(5 μ m, 250 x 4.6 mm I.D.)

Column Cat. No. : 5020-01328

Eluent : A) CH₃CN
B) 7.51 g/L NaH₂PO₄ · 2H₂O + 0.84 g/L NaClO₄ in H₂O (pH 2.0, H₃PO₄)
C) Triethylamine
A/B/C = 350/650/3, v/v/v

Flow Rate : 1.8 mL/min

Col. Temp. : 25 °C

Detection : UV 220 nm (GL-7452 PDA Detector)

Injection Vol. : 20 μ L

Sample : Standard

Analyte:

1. Fexofenadine hydrochloride 60 mg/L

Theoretical plates : 9,337 (\geq 8,000)

Tailing factor : 1.13 (\leq 2.0)

RSD of the
peak area (%) (n=6) : 0.67 (\leq 1.0)