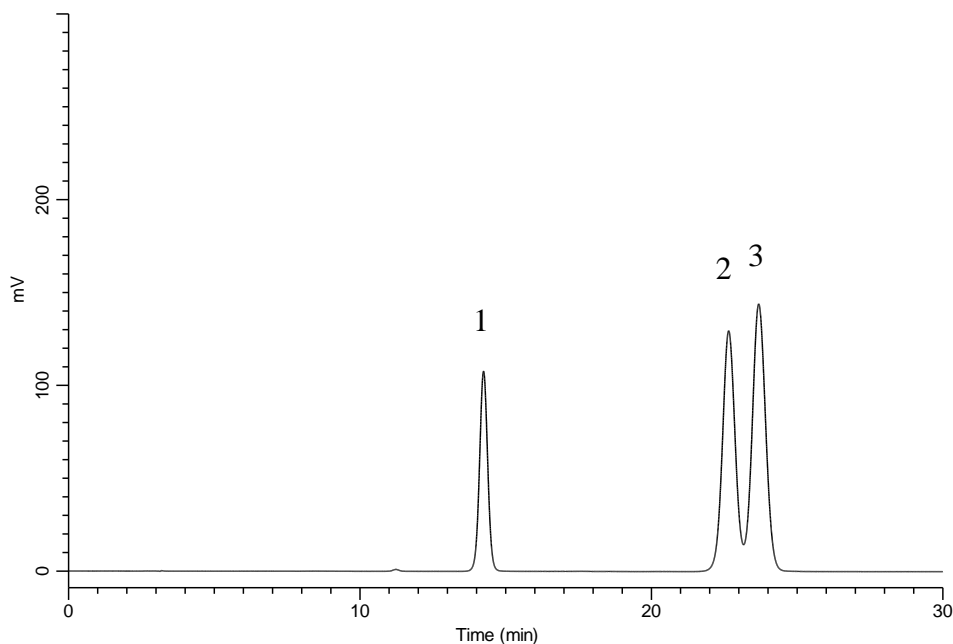


Analysis of Methylhippuric acid



Conditions

Column : InertSustain Phenyl
 (5 μ m, 250 x 4.6 mm I.D.)
Column Cat. No. : 5020-16328
Eluent : A) CH₃OH
 B) 25 mM KH₂PO₄ in H₂O (pH = 3.0, 25 mM H₃PO₄)
 A/B = 25/75, v/v
Flow Rate : 1.0 mL/min
Col. Temp. : 40 °C
Detection : UV 230 nm
Injection Vol. : 5 μ L
Sample : Standard

Analyte:

1. *o*-Methylhippuric acid
 2. *m*-Methylhippuric acid
 3. *p*-Methylhippuric acid