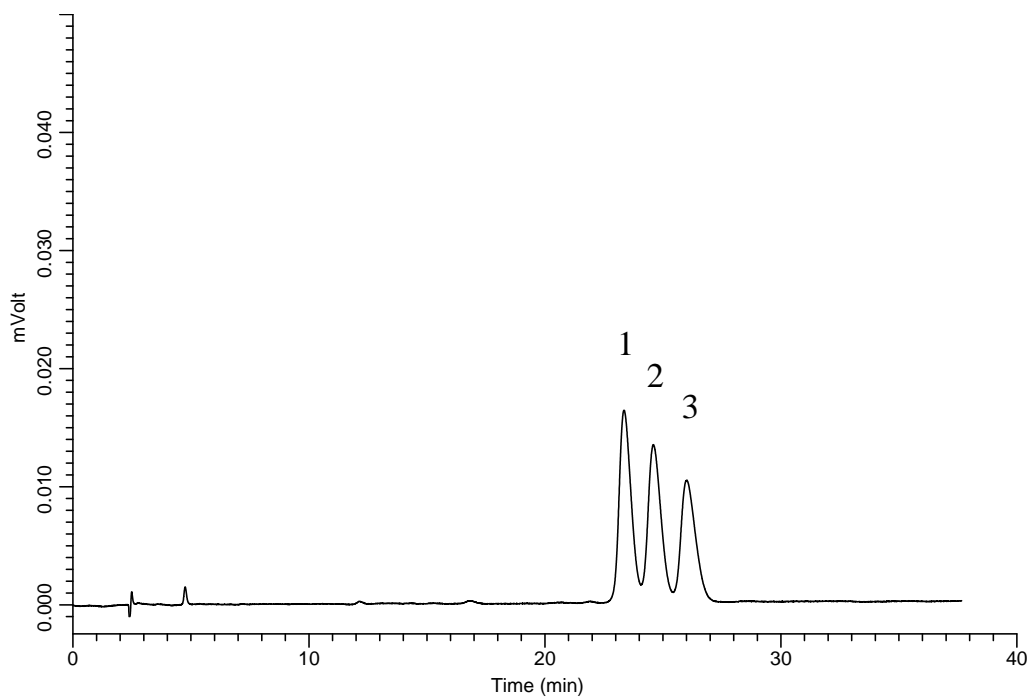


InertSearch™ for LC

Inertsil® Applications

Analysis of Cresol

Data No. LB136-0642



Conditions

Column : InertSustain Phenyl
(5 μ m, 150 x 4.6 mm I.D.)
Column Cat. No. : 5020-16327
Eluent : A) CH₃OH
B) H₂O
A/B = 20/80, v/v
Flow Rate : 0.8 mL/min
Col. Temp. : 40 °C
Detection : UV 254 nm
Injection Vol. : 5 μ L
Sample : Standard

Analyte:

1. *o*-Cresol
2. *m*-Cresol
3. *p*-Cresol