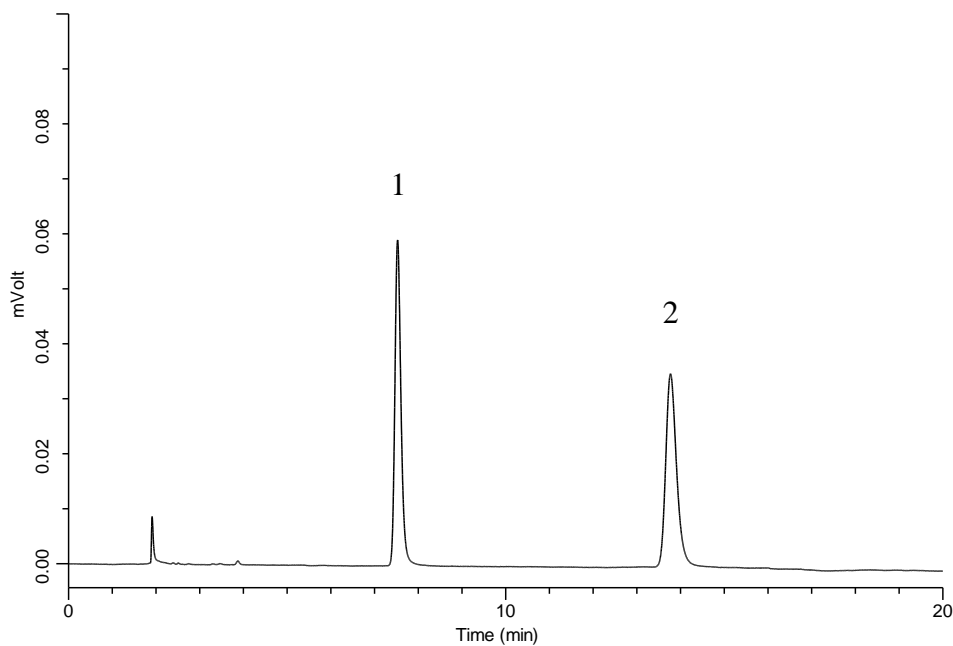


Analysis of Acesulfame potassium



Conditions

Column : InertSustain NH₂
(5 μm, 250 x 4.6 mm I.D.)

Column Cat. No. : 5020-16628

Eluent : A) CH₃CN
B) 1 % H₃PO₄ in H₂O
A/B = 60/40, v/v

Flow Rate : 1.0 mL/min

Col. Temp. : 40 °C

Detection : UV 230 nm

Injection Vol. : 3 μL

Sample : Standard

Analyte:

1. Saccharin
2. Acesulfame potassium