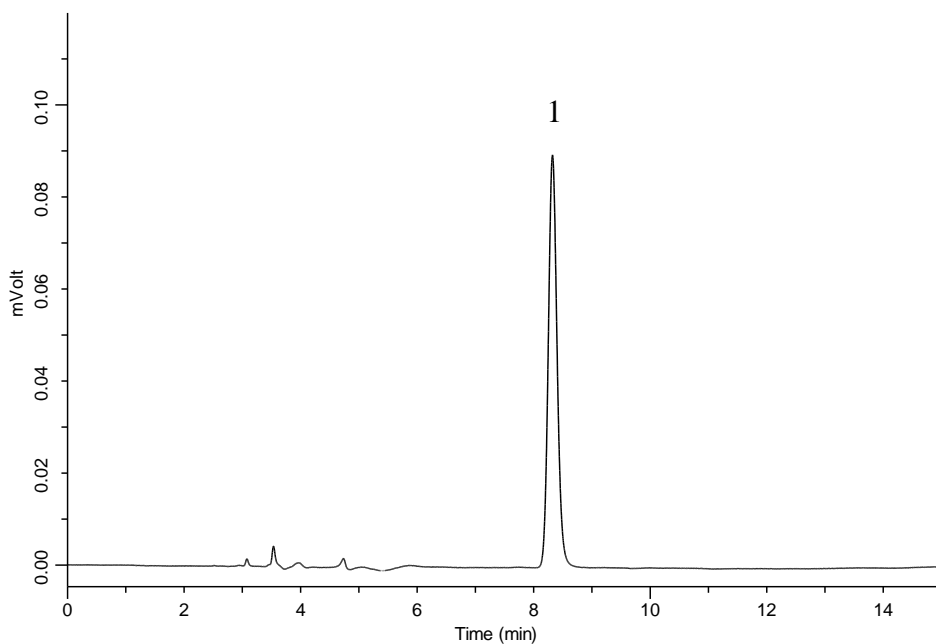


## Analysis of Allantoin



### Conditions

**Column** : InertSustain NH<sub>2</sub>  
 (5 μm, 250 x 4.6 mm I.D.)  
**Column Cat. No.** : 5020-16628  
**Eluent** : A) CH<sub>3</sub>CN  
 B) H<sub>2</sub>O  
 A/B = 85/15, v/v  
**Flow Rate** : 1.0 mL/min  
**Col. Temp.** : 40 °C  
**Detection** : UV 210 nm  
**Injection Vol.** : 3 μL  
**Sample** : Standard

### Analyte:

1. Allantoin