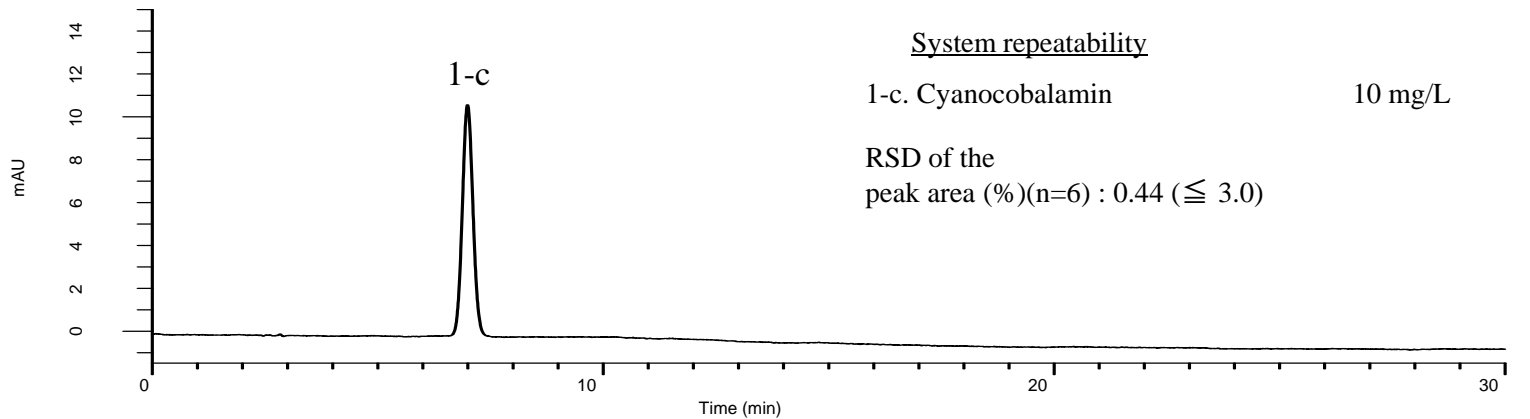
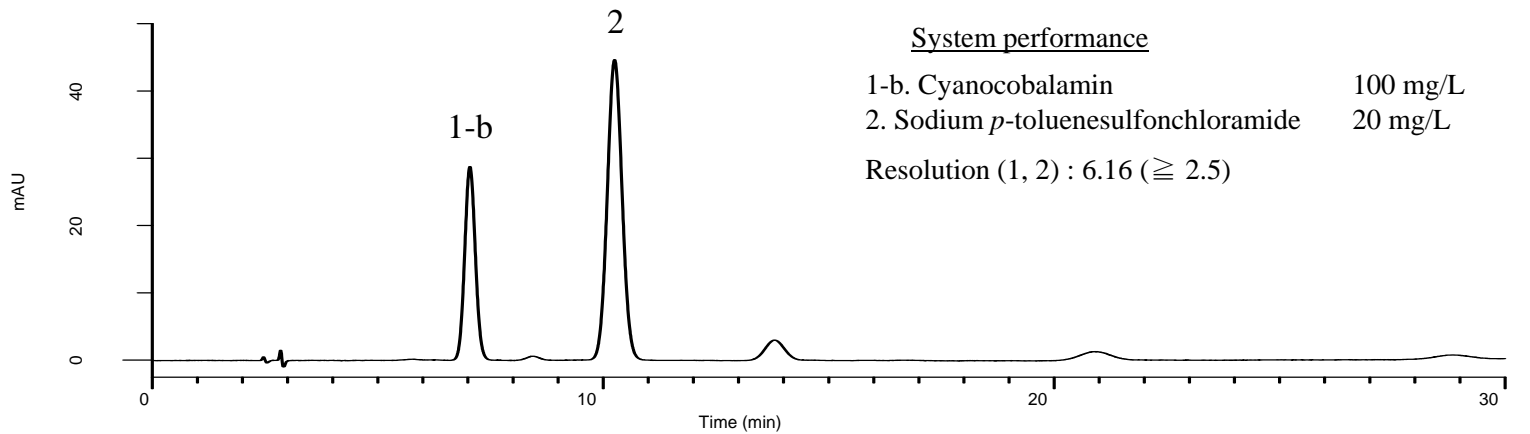
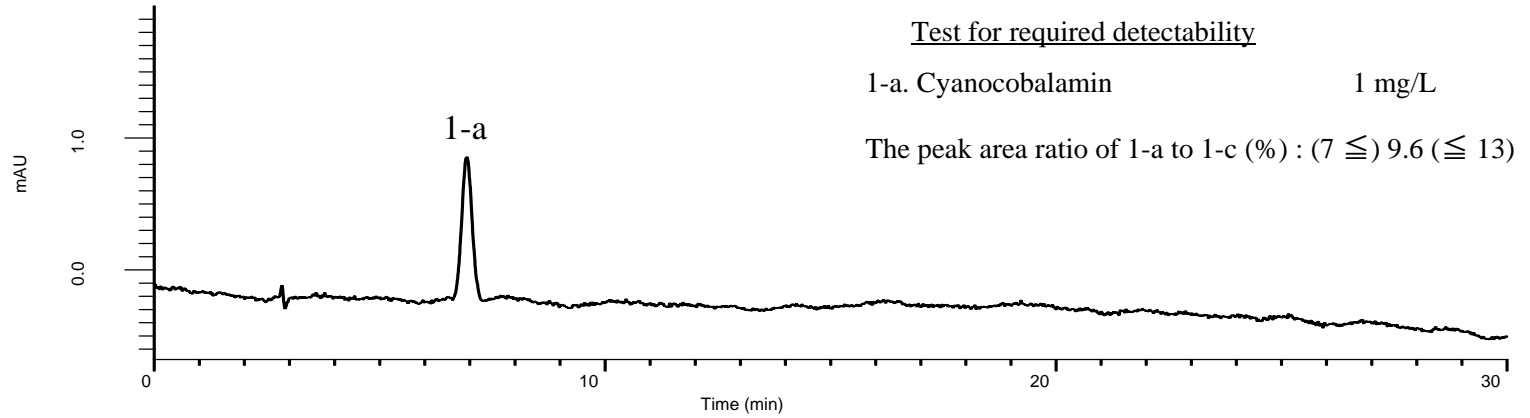


Analysis of Cyanocobalamin

(Under the Condition of the Japanese Pharmacopoeia)

Data No. LB148-0919



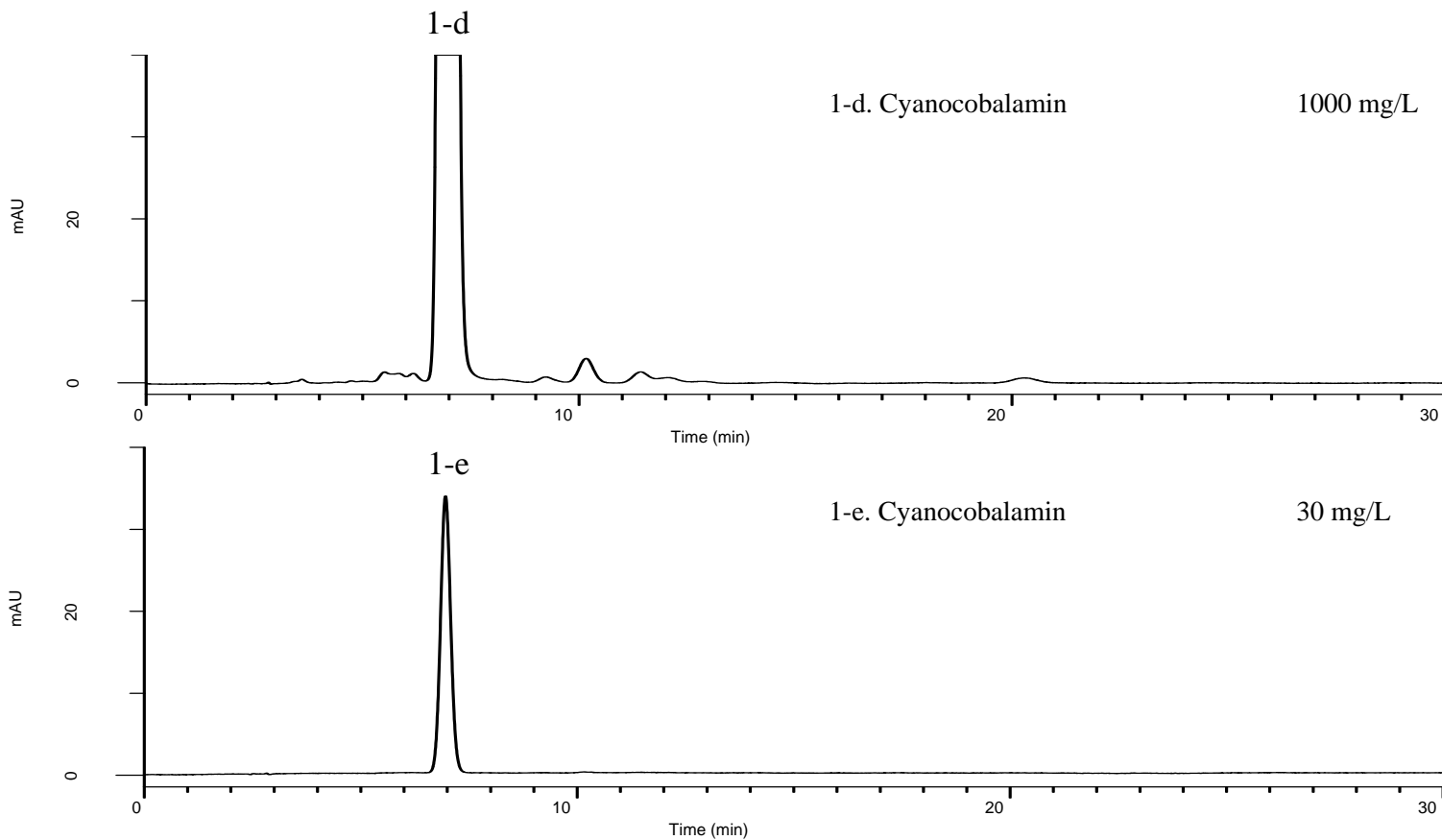
InertSearch™ for LC

Inertsil® Applications

Analysis of Cyanocobalamin

(Under the Condition of the Japanese Pharmacopoeia)

Data No. LB148-0919



Conditions

System : GL-7400 HPLC system
Column : InertSustain C8
(5 μ m, 250 x 4.6 mm I.D.)
Column Cat. No. : 5020-16028
Eluent : A) CH₃OH
B) 70 mM Na₂HPO₄ in H₂O
(pH 3.5, H₃PO₄)
A/B = 53/147, v/v
Flow Rate : 1.05 mL/min
Col. Temp. : 30 °C
Detection : UV 361 nm (GL-7452 PDA Detector)
Injection Vol. : 20 μ L
Sample : Standard

Analyte:

1. Cyanocobalamin