

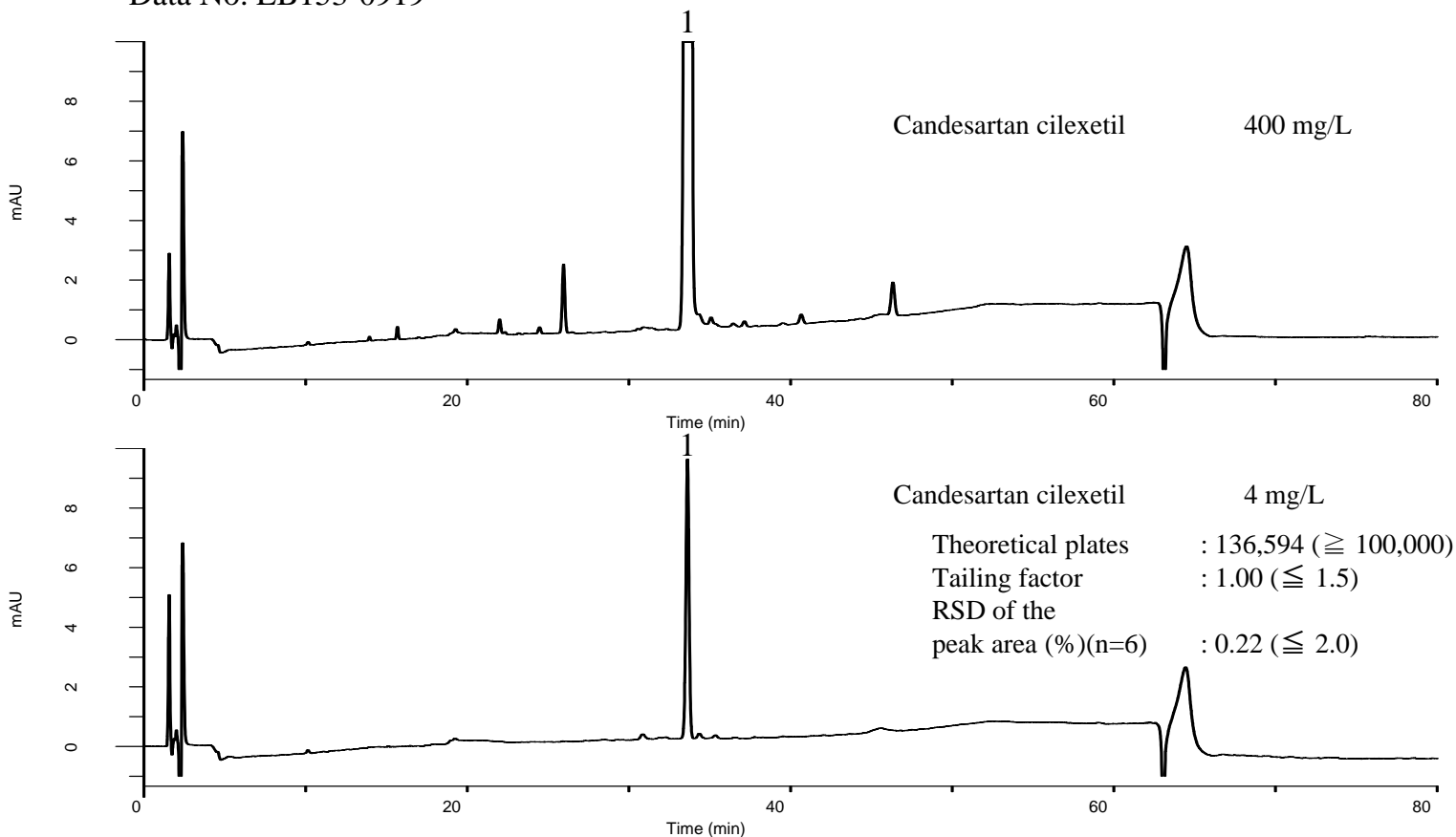
InertSearch™ for LC

Inertsil® Applications

Analysis of Candesartan cilexetil

(Under the Condition of the Japanese Pharmacopoeia,
Candesartan cilexetil and Amlodipine besylate Tablets)

Data No. LB153-0919



Conditions

System : GL-7400 HPLC system
Column : Inertsil ODS-SP
(5 μ m, 150 x 4.6 mm I.D.)
Column Cat. No. : 5020-02745
Eluent : A) CH₃CN/H₂O/TFA = 4000/1000/1, v/v/v
B) H₂O/CH₃CN/TFA = 4000/1000/1, v/v/v
A/B = 0/100 - 15 min - 50/50 - 35 min - 100/0 - 10 min - 100/0, v/v
Flow Rate : 1.0 mL/min
Col. Temp. : 25 °C
Detection : UV 253 nm (GL-7452 PDA Detector)
Injection Vol. : 20 μ L
Sample : Standard

Analyte:

1. Candesartan cilexetil