

InertSearch™ for LC

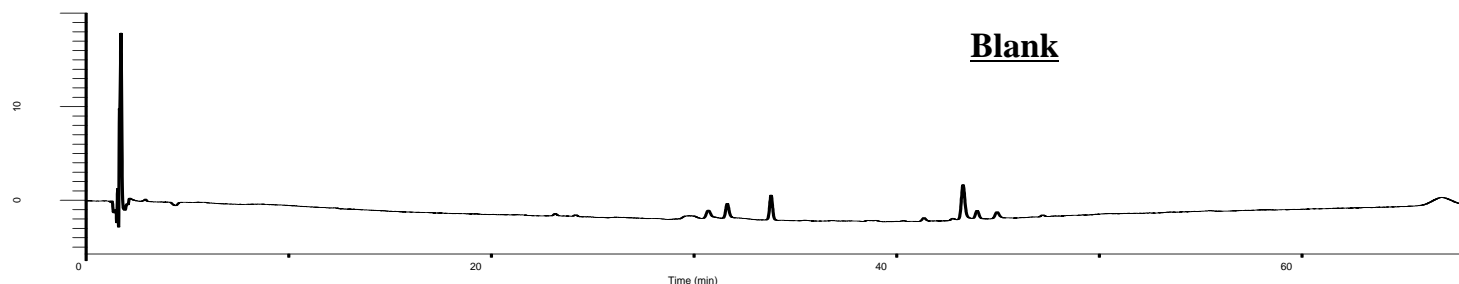
Inertsil® Applications

Analysis of Clopidogrel sulfate

(Under the Condition of the Japanese Pharmacopoeia)

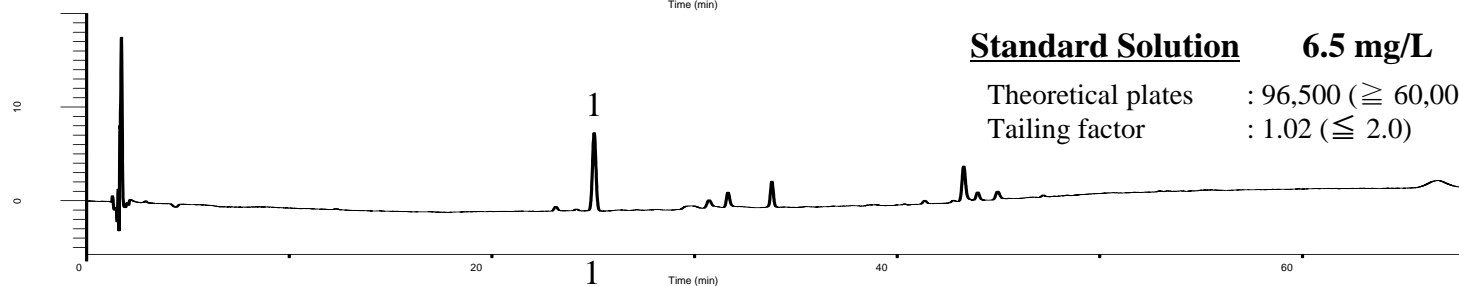
Data No. LB158-0894

Blank

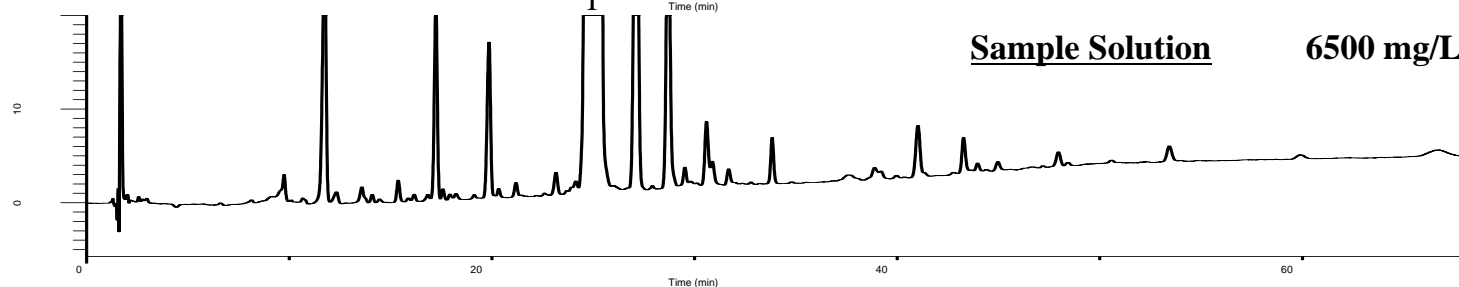


Standard Solution 6.5 mg/L

Theoretical plates : 96,500 ($\geq 60,000$)
Tailing factor : 1.02 (≤ 2.0)



Sample Solution 6500 mg/L



Conditions

System : GL-7400 HPLC system

Column : Inertsil WP300 C18
(5 μ m, 150 x 3.9 mm I.D.)

Column Cat. No. : 5020-

Eluent : A) 0.87 g/L IPCC-05 in H₂O (pH 2.5, H₃PO₄)/CH₃OH = 19/1, v/v
(IPCC-05: Sodium 1-Pentanesulfonate)
B) CH₃CN/CH₃OH = 19/1, v/v

Analyte:

1. Clopidogrel sulfate

Time(min)	A(vol%)	B(vol%)
0~3	89.5	10.5
3~48	89.5→31.5	10.5→68.5
48~68	31.5	68.5

Flow Rate : 1.0 mL/min

Col. Temp. : 30 °C

Detection : UV 220 nm (GL-7452 PDA Detector)

Injection Vol. : 10 μ L

Sample : Standard