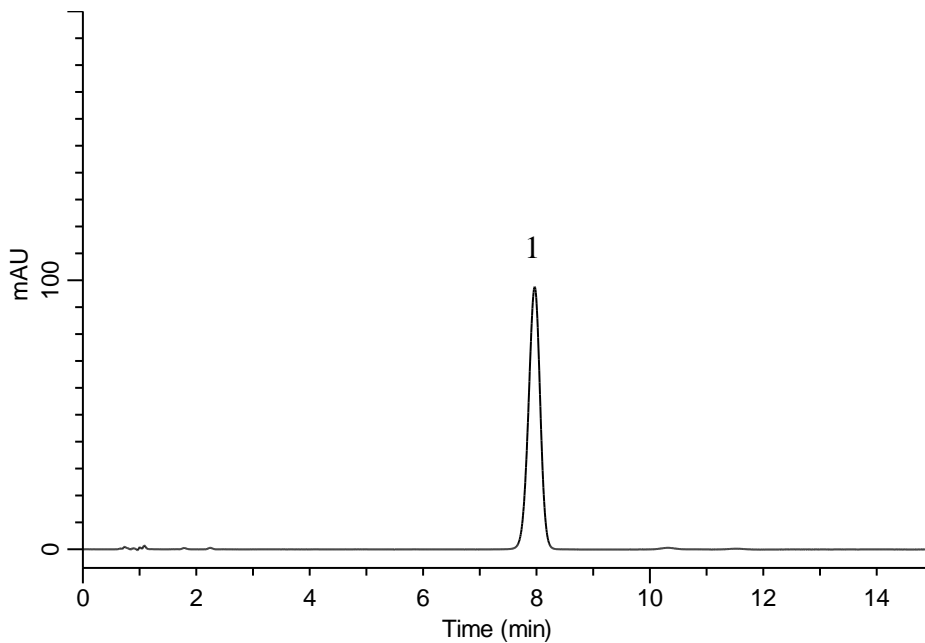


Analysis of Clopidogrel sulfate

(Under the Condition of the Japanese Pharmacopoeia)



Conditions

System : GL-7400 HPLC system
Column : InertSustain C18
 (5 μ m, 150 x 3.9 mm I.D.)
Column Cat. No. : 5020-87030
Eluent : A) 0.87 g/L IPCC-05 in H₂O (pH 2.5, H₃PO₄)/CH₃OH = 19/1, v/v
 (IPCC-05: Sodium 1-Pentanesulfonate)
 B) CH₃CN/CH₃OH = 19/1, v/v
 A/B = 60/40, v/v
Flow Rate : 1.5 mL/min
Col. Temp. : 30 °C
Detection : UV 220 nm (GL-7452 PDA Detector)
Injection Vol. : 10 μ L
Sample : Standard

Analyte:

1. Clopidogrel sulfate 126 mg/L

Theoretical plates : 7,030 (\geq 4,500)
 Tailing factor : 0.94 (\leq 2.0)