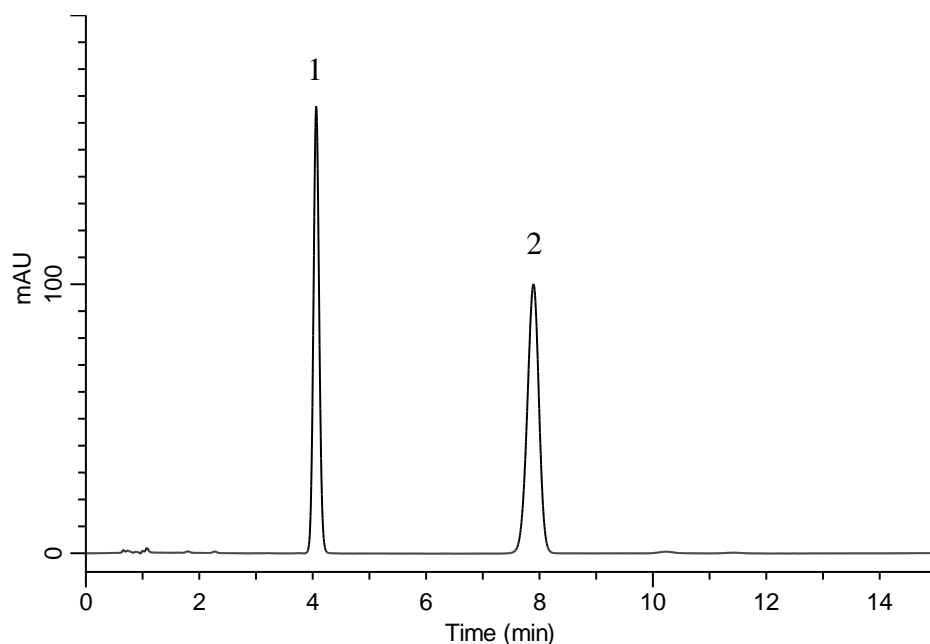


Analysis of Clopidogrel sulfate

(Under the Condition of the Japanese Pharmacopoeia,
Clopidogrel sulfate Tablets)



Conditions

System : GL-7400 HPLC system

Column : InertSustain C18
(5 μ m, 150 x 3.9 mm I.D.)

Column Cat. No. : 5020-87030

Eluent : A) 0.87 g/L IPCC-05 in H₂O (pH 2.5, H₃PO₄)/CH₃OH = 19/1, v/v
(IPCC-05: Sodium 1-Pentanesulfonate)
B) CH₃CN/CH₃OH = 19/1, v/v
A/B = 60/40, v/v

Flow Rate : 1.5 mL/min

Col. Temp. : 30 °C

Detection : UV 220 nm (GL-7452 PDA Detector)

Injection Vol. : 10 μ L

Sample : Standard

Analyte:

1. *p*-Hydroxybenzoic acid *iso*-propyl ester 133 mg/L
2. Clopidogrel sulfate 132 mg/L

Resolution (1, 2) : 13.6 (\geq 4)

Theoretical plates (1) : 7,600

Theoretical plates (2) : 6,903

Tailing factor (1) : 1.06

Tailing factor (2) : 0.94