

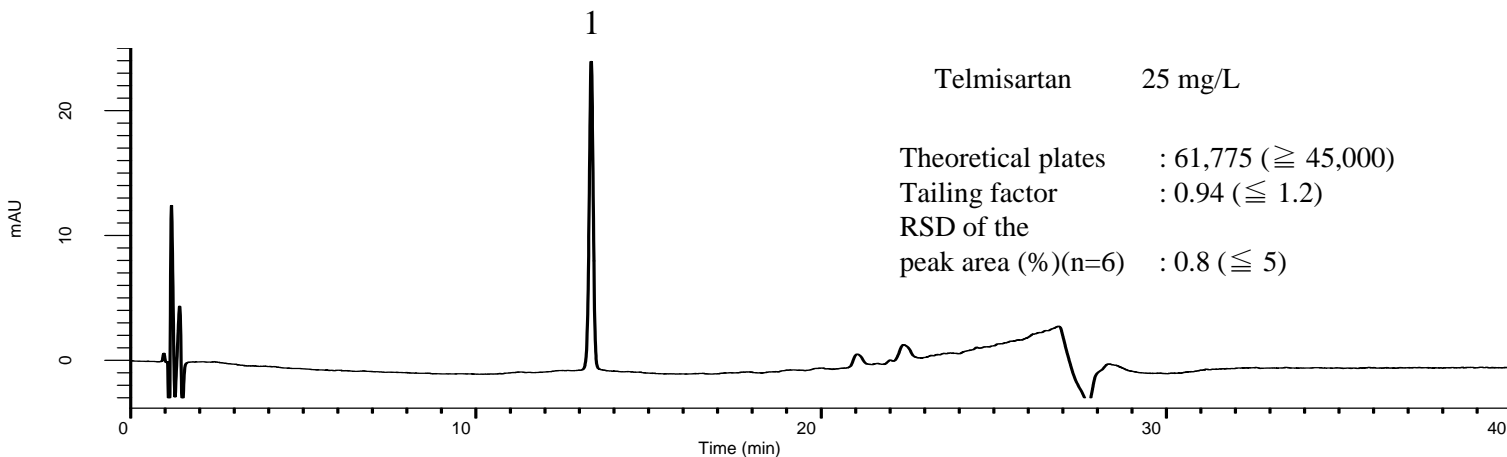
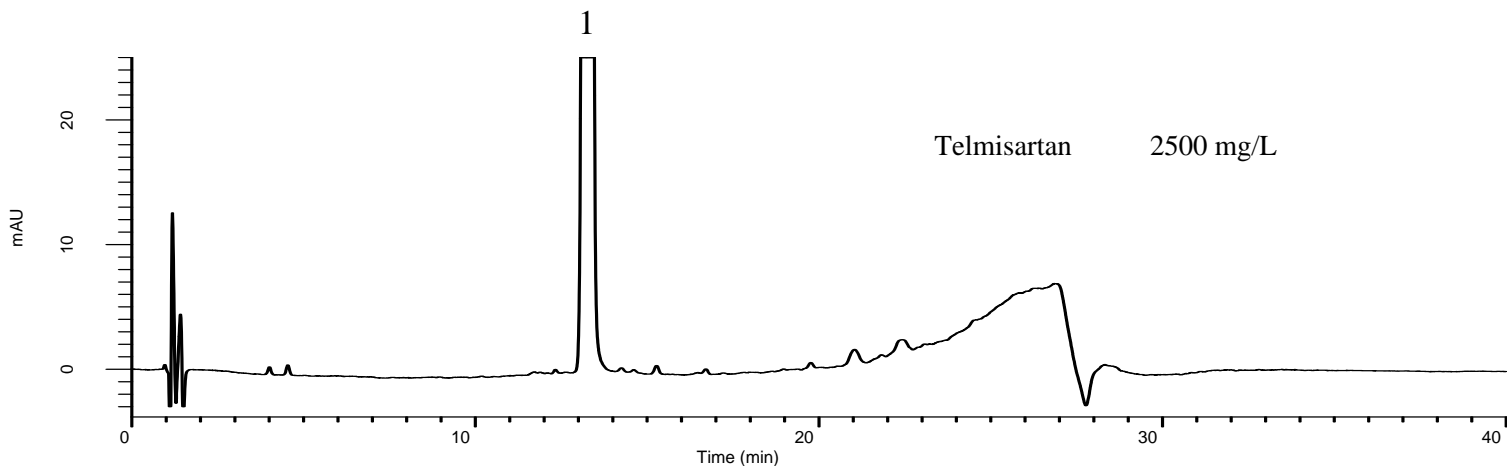
# InertSearch™ for LC

Inertsil® Applications

## Analysis of Telmisartan

(Under the Condition of the Japanese Pharmacopoeia)

Data No. LB163-0919



### Conditions

**System** : GL-7400 HPLC system  
**Column** : Inertsil ODS-SP  
(5  $\mu$  m, 125 x 4.0 mm I.D.)  
**Column Cat. No.** : 5020-  
**Eluent** : A) CH<sub>3</sub>CN/CH<sub>3</sub>OH = 4/1, v/v  
B) 2.0 g/L KH<sub>2</sub>PO<sub>4</sub> + 3.4 g/L IPCC-05  
(pH 3.0, 10 % H<sub>3</sub>PO<sub>4</sub> in H<sub>2</sub>O)  
(IPCC-05: Sodium 1-Pentanesulfonate)  
A/B = 30/70 - 25 min - 80/20, v/v  
**Flow Rate** : 1.0 mL/min  
**Col. Temp.** : 40 °C  
**Detection** : UV 230 nm (GL-7452 PDA Detector)  
**Injection Vol.** : 2  $\mu$  L  
**Sample** : Standard

### Analyte:

1. Telmisartan