

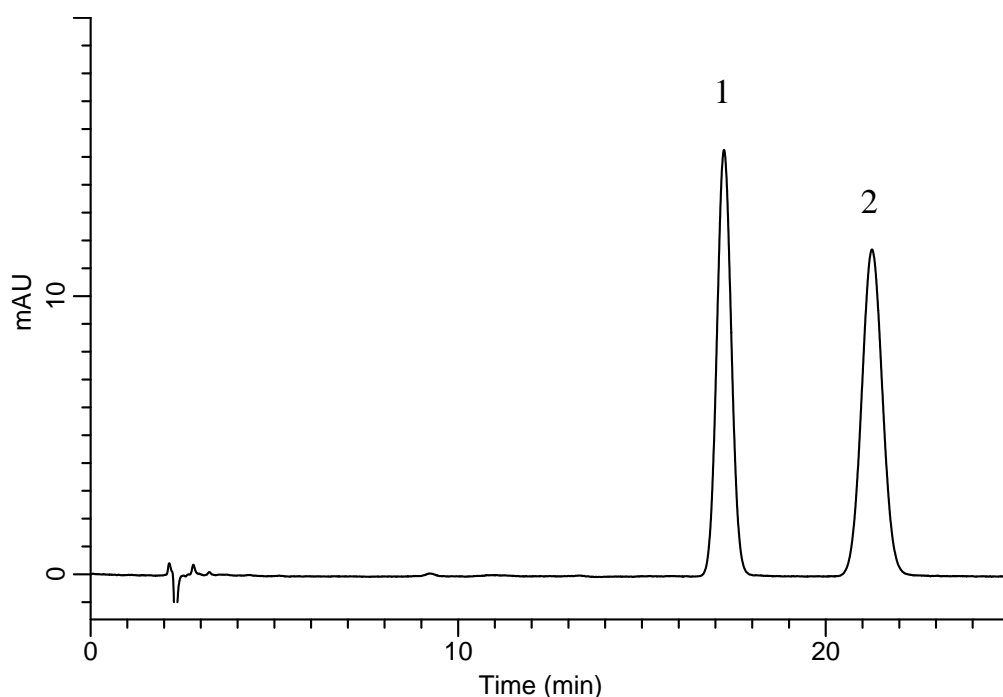
InertSearch™ for LC

Inertsil® Applications

Analysis of Pravastatin Sodium

(Under the Condition of the Japanese Pharmacopoeia,
Pravastatin Sodium Tablets)

Data No. LB166-0894



Conditions

System : GL-7400 HPLC system
Column : Inertsil WP300 C18
(5 μ m, 150 x 4.6 mm I.D.)
Column Cat. No. : 5020-05845
Eluent : A) CH₃OH
B) H₂O
C) CH₃COOH
D) Triethylamine
A/B/C/D = 450/550/1/1, v/v/v/v
Flow Rate : 0.9 mL/min
Col. Temp. : 25 °C
Detection : UV 238 nm (GL-7452 PDA Detector)
Injection Vol. : 10 μ L
Sample : Standard

Analyte:

1. *p*-Hydroxybenzoic acid *n*-propyl ester 30 mg/L
2. Pravastatin sodium 32 mg/L

Resolution (1, 2) : 4.5 (\geq 4)
RSD of the peak
area ratio of
2 to 1 (%) (n=6) : 0.41 (\leq 1.0)